

From: <lyris@swrcb18.waterboards.ca.gov>
To: "Theresa L. Rodgers" <trodgers@waterboards.ca.gov>
Date: 7/6/2009 3:19 PM
Subject: New LYRIS E-mail Notification for Regional Board Correspondence re. LA County MS4 Permit

This is a message from the California Regional Water Quality Control Board, Los Angeles Region (4).

You have been added to an e-mail subscription list of the Los Angeles Regional Water Quality Control Board (Regional Board) regarding the Los Angeles County Municipal Separate Storm Sewer System (MS4) Permit (Order No. 01-182 as amended by Order R4-2006-0074 and Order R4-2007-0042). All future correspondence from the Regional Board regarding the LA County MS4 Permit will be sent to you via this e-mail subscription, unless you notify the Regional Board otherwise.

If you wish to be removed from the e-mail distribution list, please let us know by contacting Theresa Rodgers via e-mail at trodgers@waterboards.ca.gov or by fax at (213) 576-6686. Likewise, if you would like to receive hard copies of all correspondence instead of electronic copies, please provide your contact information including name, organization, and mailing address to Theresa Rodgers either via the e-mail or fax identified above.

Please also inform other interested persons who may wish to receive correspondence from the Regional Board of the e-mail subscription service. Interested persons may subscribe by going to the Regional Board's website at http://www.waterboards.ca.gov/resources/email_subscriptions/reg4_subscribe.shtml.

You are currently subscribed to reg4_sw_lacounty_ms4 as: trodgers@waterboards.ca.gov
To unsubscribe send a blank email to
leave-reg4_sw_lacounty_ms4-2625651@swrcb18.waterboards.ca.gov

LYRIS MAILING

LIST NAME: SW-LA-MS4
 DATE MAILED: 7/6/09

DATEJOINED_	EMAILADDR_	FULLNAME_
7/6/2009 13:38	City_manager@ci.glendora.ca	Chris Jeffers
7/6/2009 13:58	EKiepke@WILLDAN.com	E. Kiepke
7/6/2009 13:21	FredLatham@santafesprings.c	Frederick W. Latham
7/6/2009 13:07	James.Destefano@ci.diamonc	James DeStefano
7/6/2009 13:35	John.Beshay@westcovina.org	John Beshay
7/6/2009 13:53	Kaden.Young@culvercity.org	Kaden Young
7/6/2009 13:51	Rhughes@WILLDAN.com	Roxanne Hughes
7/6/2009 13:57	Robert.Vega@lacity.org	Robert Vega
7/6/2009 13:04	Rwood@beverlyhills.org	Roderick J. Wood
7/6/2009 13:49	Skennedy@enfact.net	Sheila Kennedy
7/6/2009 13:41	Steven.Finton@CulverCity.org	Steven Finton
7/6/2009 13:55	TLANGE@santa-clarita.com	Travis Lange
7/6/2009 13:18	acablay@pico-rivera.org	Al Cablay
7/6/2009 13:43	acecivil@aol.com	Carlos A. Alba
7/6/2009 13:19	adahlerbruch@cityofrh.net	Anton Dahlerbruch
7/6/2009 13:47	afarassati@cityofcalabasas.co	Alex Farassati
7/6/2009 13:54	aharrington@ci.claremont.ca.u	Andrea Harrington
7/6/2009 13:46	ajensen@ci.walnut.ca.us	Alicia Jensen
7/6/2009 13:58	amelia@hulsenv.com	
7/6/2009 13:39	amho@montereypark.ca.gov	Amy Ho
7/6/2009 13:23	andrew.pasmant@westcovina.	Andrew G. Pasmant
7/6/2009 13:18	arigg@pvestates.org	Allan Rigg
7/6/2009 13:41	ashadbehr@cityofhawthorne.o	Arnold Shadbehr
7/6/2009 13:17	bbrager@ci.malibu.ca.us	Bob Brager
7/6/2009 13:56	bdedeaux@rkagroup.com	Barbara Dedeaux
7/6/2009 13:19	bill.workman@redondo.org	Bill Workman
7/6/2009 13:44	biniguez@bellflower.org	Bernie Iniguez
7/6/2009 13:38	binman@ci.sierra-madre.ca.us	Bruce Inman
7/6/2009 13:45	bmattern@sgch.org	Bruce Mattern
7/6/2009 13:20	bmichaelis@ci.san-dimas.ca.u	Blaine M. Michaelis
7/6/2009 13:04	bteaford@ci.burbank.ca.us	Bonnie Teaford
7/6/2009 13:54	cammc@jlha.net	John Hunter Cameron McCullough
7/6/2009 13:54	cbarsu@ci.el-monte.ca.us	Carmen Barsu
7/6/2009 13:41	cbradshaw@ci.claremont.ca.u	Craig Bradshaw
7/6/2009 13:43	ccash@paramountcity.com	Chris Cash
7/6/2009 13:21	ccollins@cityofsanmarino.org	Cindy Collins
7/6/2009 13:18	cconsunji@ci.norwalk.ca.us	Chino Consunji
7/6/2009 13:06	cevans@comptoncity.org	Charles Evans
7/6/2009 13:08	citymanager@hiddenhillscity.o	Cherie L. Paglia
7/6/2009 13:19	clehr@rpv.com	Carolyn Lehr
7/6/2009 13:23	cmartin@templecity.us	Charles R. Martin
7/6/2009 13:55	cmeeker@cityofalhambra.org	Claudine Meeker
7/6/2009 13:24	cmrtay@wlv.org	Raymond B. Taylor
7/6/2009 13:54	croberts@aaeinc.com	Cory Roberts
7/6/2009 13:07	dalvarez@downeyca.org	Desi Alvarez
7/6/2009 13:42	danflorescu@caaprofessionals	Dan Florescu
7/6/2009 13:08	ddavies@ci.glendora.ca.us	Dave Davies
7/6/2009 13:10	dkeesey@ci.la-verne.ca.us	Daniel Keesey
7/6/2009 13:48	dlopez@baldwinpark.com	David Lopez
7/6/2009 13:34	dlopez@pico-rivera.org	Debbie Lopez
7/6/2009 13:39	donjensen@santafesprings.or	Donald K. Jensen

7/6/2009 13:47 dougp@ci.rolling-hills-estates.c Douglas Prichard
7/6/2009 13:57 dpankau@cityofcalabasas.con Daniel Pankau
7/6/2009 13:24 dpelser@cityofwhittier.org David Pelser
7/6/2009 12:59 dpenman@ci.arcadia.ca.us Donald Penman
7/6/2009 13:49 drynn@ci.burbank.ca.us Daniel Rynn
7/6/2009 13:22 eaguilar@ci.sierra-madre.ca.u Elaine Aguilar
7/6/2009 13:17 eahrens@cityofmaywood.com Ed Ahrens
7/6/2009 13:23 efresch@ci.vernon.ca.us Eric Fresch
7/6/2009 13:09 ehitti@lcf.ca.gov Edward Hitti
7/6/2009 13:50 ekiepke@willdan.com E. Kiepke
7/6/2009 13:41 emansfield@aei-casc.com Ernie Mansfield
7/6/2009 13:40 emarquez@hgcity.org Ernesto Marquez
7/6/2009 13:46 esaikaly@lynwood.ca.us Elias Saikaly
7/6/2009 13:17 esaykali@montereypark.ca.go Elias Saykali
7/6/2009 13:39 esbenshades@accessduarte.c Steve Esbenshades
7/6/2009 13:01 fdelach@ci.azusa.ca.us Francis M. Delach
7/6/2009 13:45 fwu@dpw.lacounty.gov Frank Wu
7/6/2009 13:37 gcanton@downeyca.org Gerald Caton
7/6/2009 13:40 gdoian@citymb.info Geoff Dolan
7/6/2009 13:07 georged@accessduarte.com Darrell George
7/6/2009 13:51 ggroome@downeyca.org Gerry Greene
7/6/2009 13:09 gkau@cityofinglewood.org Glen Kau
7/6/2009 13:09 gkorduner@huntingtonpark.org Gregory Korduner
7/6/2009 13:06 gperez@cityofcudahyca.gov George Perez
7/6/2009 13:57 gregg@ci.rolling-hills-estates.c Gregg Grammer
7/6/2009 13:55 guy-welling@smgov.net Gary Welling
7/6/2009 13:09 gw1763@aol.com Stan Carroll
7/6/2009 13:10 gyamachika@lapuente.org Gregg Yamachika
7/6/2009 13:47 hbehboodi@hermosabch.org Homayoun Behboodi
7/6/2009 13:10 hchambers@lakewoodcity.org Howard L. Chambers
7/6/2009 13:56 hmaloney@ci.monrovia.ca.us Heather Maloney
7/6/2009 13:39 ideltoro@ci.azusa.ca.us Israel Del Toro
7/6/2009 13:41 jaormelas@bellgardens.org G. Simonian
7/6/2009 13:17 jarndt@citymb.info Jim Arndt
7/6/2009 13:52 jcarlson@ci.sierra-madre.ca.u James Carlson
7/6/2009 13:08 jcolombo@hgcity.org Joseph Colombo
7/6/2009 13:43 jcowam@cityofalhambra.org James Cowan
7/6/2009 13:09 jdballas@cityofindustry.org John D. Ballas
7/6/2009 13:47 jdescalzo@beverlyhills.org Josette Descalzo
7/6/2009 13:43 jdettle@torrnet.com John Dettle
7/6/2009 13:07 jerry.fulwood@culvercity.org Jerry B. Fulwood
7/6/2009 13:19 jessie_powell@urscorp.com Jessie Powell
7/6/2009 13:05 jgrooms@carson.ca.us Jerome Groomes
7/6/2009 13:46 jharmon@weho.org Jan Harmon
7/6/2009 13:51 jhunter@jlha.net John L. Hunter
7/6/2009 13:07 jmussenden@ci.el-monte.ca.u James W. Mussenden
7/6/2009 13:06 jorger@ci.commerce.ca.us Jorge Rifa
7/6/2009 13:03 joropeza@bellgardens.org John Oropeza
7/6/2009 13:40 jortega@lapuente.org Jeanette Ortega
7/6/2009 13:40 joyce.lee@ci.diamond-bar.ca.t Joyce Lee
7/6/2009 13:06 jparker@ci.claremont.ca.us Jeff Parker
7/6/2009 13:08 jpathirana@cityofhawthorne.or Jag Pathirana

7/6/2009 13:46	jpulido@sfcity.org	Jose E. Pulido
7/6/2009 13:38	jranells@ci.la-verne.ca.us	J. R. Ranells
7/6/2009 13:56	jstock@bellflower.org	Jerry Stock
7/6/2009 13:18	jvalentine@cityofpasadena.net	Jim Valentine
7/6/2009 13:35	javoccola@ci.malibu.ca.us	Jennifer Voccola
7/6/2009 13:07	jwayt@elsegundo.org	Jack Wayt
7/6/2009 13:20	kathleen.enve@verizon.net	Kathleen McGowan
7/6/2009 13:45	kbreskin@lawndalecity.org	Keith Breskin
7/6/2009 13:03	kevinpowers@caaprofessional	Kevin Powers
7/6/2009 13:22	kfarfsing@ci.signal-hill.ca.us	Kenneth C. Farfsing
7/6/2009 13:06	kgallivan@ci.covina.ca.us	Karen Gallivan
7/6/2009 13:03	kimberlycolbert@caaprofessio	Kimberly Colbert
7/6/2009 13:36	kpatel@ci.san-dimas.ca.us	Krishna Patel
7/6/2009 13:21	kpulskamp@santa-clarita.com	Kenneth R. Pulskamp
7/6/2009 13:09	ktam@ci.irwindale.ca.us	Kwok Tam
7/6/2009 13:40	kvivanti@lakewoodcity.org	Konya Vivanti
7/6/2009 13:52	kwatson@cityofinglewood.org	Ken Watson
7/6/2009 13:38	kwilson@ci.vernon.ca.us	Samuel Kevin Wilson
7/6/2009 13:40	lamimoto@cityofinglewood.org	Lauren Amimoto
7/6/2009 13:22	lamont.ewell@smgov.net	P. Lamont Ewell
7/6/2009 13:18	lbenedetti@paramountcity.com	Linda Benedetti-Leal
7/6/2009 13:23	ljackson@torrnet.com	LeRoy Jackson
7/6/2009 13:20	lleblanc@cityofrosemead.org	Lou LeBlanc
7/6/2009 13:22	lmyers@ci.south-pasadena.ca	Lillian Myers
7/6/2009 13:36	lpyeatt@comptoncity.org	Leslie Alan Pyeatt
7/6/2009 13:47	lramirez@cityofbell.org	Luis Ramirez
7/6/2009 12:58	luwan@cityofalhambra.org	Julio J. Fuentes
7/6/2009 13:39	malexander@lcf.ca.gov	Mark R. Alexander
7/6/2009 13:11	mark-christoffels@longbeach.	Mark Christoffels
7/6/2009 13:48	mcuevas@pico-rivera.org	Marco Cuevas
7/6/2009 13:00	mdadian@cityofartesia.us	Maria Dadian
7/6/2009 13:45	mduran@ci.gardena.ca.us	Mike Duran
7/6/2009 13:04	megan@bellflower.org	Mike Egan
7/6/2009 13:58	michael@hulsen.com	J. Michael Huls
7/6/2009 13:36	mike.shay@redondo.org	Mike Shay
7/6/2009 13:05	mike_ogrady@ci.cerritos.ca.us	Mike O'Grady
7/6/2009 13:04	mkeith@cityofbradbury.org	Michelle Keith
7/6/2009 13:08	mlansdell@ci.gardena.ca.us	Mitchell G. Lansdell
7/6/2009 13:47	mmilhiser@cityoflamirada.org	Mike Milhiser
7/6/2009 13:10	mmiyoshi@lawndalecity.org	Marlene Miyoshi
7/6/2009 13:58	mmunoz@cityoflamirada.org	Marlin Munoz
7/6/2009 13:47	moillataguerre@ci.glendale.ca	Maurice Oillataguerre
7/6/2009 13:47	morad.sedrak@lacity.org	Morad Sedrak
7/6/2009 13:21	mpaules@sgch.org	P. Michael Paules
7/6/2009 13:11	mpestrel@dpw.lacounty.gov	Mark Pestrella
7/6/2009 13:38	mrodriguez@ci.arcadia.ca.us	Marie Rodriguez
7/6/2009 13:46	mstrenn@sogate.org	Mary Strenn
7/6/2009 13:52	nasser.sh@lcf.ca.gov	Nasser Shoushtarian
7/6/2009 13:43	neal.shapiro@smgov.net	Neal Shapiro
7/6/2009 13:43	ocramer@santa-clarita.com	Oliver Cramer
7/6/2009 13:24	parevalo@weho.org	Paul Arevalo
7/6/2009 13:41	pelkins@carson.ca.us	Patricia Elkins

7/6/2009 13:40	pfu@huntingtonpark.org	Pat Fu
7/6/2009 12:57	radeva@ci.agoura-hills.ca.us	Ramiro Adeva
7/6/2009 13:36	randersen@ci.burbank.ca.us	Rodney Andersen
7/6/2009 11:43	randerson@waterboards.ca.gov	Robert Anderson
7/6/2009 13:17	rbow@ci.monrovia.ca.us	Ron Bow
7/6/2009 13:22	rdickey@sogate.org	Robert T. Dickey
7/6/2009 13:42	rfajardo@elsegundo.org	Ron Fajardo
7/6/2009 13:17	rhaley@lynwood.ca.us	Roger Haley
7/6/2009 13:48	rkenny@soelmonte.org	Ron Kenny
7/6/2009 13:41	robertz@ci.commerce.ca.us	Robert Zarrilli
7/6/2009 13:20	rruiz@sfcity.org	Ron Ruiz
7/6/2009 13:53	rsalas@lapuente.org	Rene Salas
7/6/2009 13:49	rtahir@tecsenv.com	Ray Tahir
7/6/2009 13:17	rtorres@cityofmontebello.com	Richard Torres
7/6/2009 13:53	rvasquez@scsengineers.com	Ralph Vasquez
7/6/2009 13:23	rwishner@ci.walnut.ca.us	Rob Wishner
7/6/2009 13:49	sam.gutierrez@westcovina.org	Sam Gutierrez
7/6/2009 13:20	samw@ci.rolling-hills-estates.ca.us	Samuel R. Wise
7/6/2009 13:52	sarinamoraleschoate@santafe.org	Sarina Morales-Choate
7/6/2009 13:08	sburrell@hermosabch.org	Stephen R. Burrell
7/6/2009 13:37	scott@wlv.org	Scott Wolfe
7/6/2009 13:57	sepstein@beverlyhills.org	Shana Epstein
7/6/2009 13:43	sfurukawa@ci.south-pasadena.ca.us	Shin Furukawa
7/6/2009 13:25	sgrund@lacsdsd.org	Shannon Grund
7/6/2009 13:11	shahram.Kharaghani@lacity.org	Shahram Kharaghani
7/6/2009 13:38	shelvey@cityofwhittier.org	Stephen W. Helvey
7/6/2009 11:32	skelley@waterboards.ca.gov	Sandra Kelley
7/6/2009 13:52	snatsuhara@ci.vernon.ca.us	Sherwood Natsuhara
7/6/2009 13:46	sochoa@ci.monrovia.ca.us	Scott Ochoa
7/6/2009 13:08	szurn@ci.glendale.ca.us	Stephen M. Zurn
7/6/2009 13:04	tcoroalles@cityofcalabasas.ca.us	Anthony Coroalles
7/6/2009 13:03	tdiaz@cityofbell.org	Robert A. Rizzo
7/6/2009 13:46	tmelendrez@cityofmontebello.com	Tom Melendrez
7/6/2009 13:11	todom@lomita.com	Tom A. Odom
7/6/2009 13:10	trobinsin@cityoflamirada.org	Tom E. Robinson
7/6/2009 11:29	trodgers@waterboards.ca.gov	Theresa L. Rodgers
7/6/2009 13:22	tybarra@soelmonte.org	Tony Ybarra
7/6/2009 13:42	vcastro@ci.covina.ca.us	Vivian Castro
7/6/2009 13:56	vhevener@lynwood.ca.us	Vanessa Hevener
7/6/2009 13:55	victorukpolo@caaprofessional.org	Victor Ukpole
7/6/2009 13:53	vrollinger@carson.ca.us	Victor Rollinger
7/6/2009 13:03	vsinghal@baldwinpark.com	Vijay Singhal
7/6/2009 13:52	wrlindinc@aol.com	Wes Lind
7/6/2009 13:35	ys@cityofrh.net	Yolanta Schwartz



California Regional Water Quality Control Board

Los Angeles Region



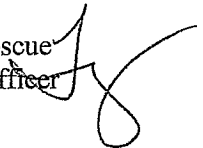
Recipient of the 2001 *Environmental Leadership Award* from Keep California Beautiful

Linda S. Adams
Agency Secretary

320 W. 4th Street, Suite 200, Los Angeles, California 90013
Phone (213) 576-6600 FAX (213) 576-6640 - Internet Address: <http://www.waterboards.ca.gov/losangeles>

Arnold Schwarzer
Governor

TO: Permittees and Other Interested Persons

FROM: Tracy J. Egoscue
Executive Officer 

DATE: July 6, 2009

SUBJECT: MODIFICATIONS TO WASTE DISCHARGE REQUIREMENTS FOR THE COUNTY OF LOS ANGELES MUNICIPAL STORM WATER DISCHARGE PERMIT (NPDES NO. CAS004001) TO INCORPORATE PROVISIONS OF THE LOS ANGELES RIVER WATERSHED TRASH TOTAL MAXIMUM DAILY LOAD (TMDL)

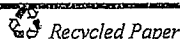
The California Regional Water Quality Control Board, Los Angeles Region (Regional Board) will consider modifications to Waste Discharge Requirements for the County of Los Angeles Municipal Storm Water Discharge Permit (NPDES No. CAS004001; LA County MS4 Permit) in the near future. The modifications to be considered are new findings and permit provisions to implement the Los Angeles River Watershed Trash TMDL and, specifically, the applicable waste load allocations assigned to the LA County MS4 permittees that are identified as responsible jurisdictions in the TMDL.

The Regional Board adopted the Los Angeles River Watershed Trash TMDL on August 9, 2007. The TMDL was subsequently approved by the State Water Resources Control Board, the Office of Administrative Law, and the United States Environmental Protection Agency and became effective on September 23, 2008. 40 CFR section 122.44(d)(4)(vii)(B) requires that NPDES permits must be consistent with the assumptions and requirements of any available waste load allocation. The Waste Load Allocations in the trash TMDL are expressed as progressively decreasing amounts of trash discharges (by weight or volume) to the storm drain system for protection of recreation and aquatic life beneficial uses in the Los Angeles River Watershed. These beneficial uses are impaired by large accumulations of floating, suspended and settled debris throughout the river system.

Basin Plan Tables 7-2.1, 7-2.2, and 7-2.3 set forth the provisions of the Los Angeles River Trash TMDL. These provisions require permittees, identified as responsible jurisdictions in the TMDL, to take appropriate measures to achieve a progressive reduction of their trash discharges to the storm drain system until the final target of zero trash discharge is met.

In advance of the Board's consideration of this matter, the Regional Board requests input from permittees and other interested persons regarding incorporating the provisions of the trash TMDL into the LA County MS4 Permit. The Regional Board staff will host a public workshop to receive comments and suggestions on this matter. Permittees subject to the Waste Discharge Requirements for the County of Los Angeles Municipal Storm Water Discharge Permit (NPDES No. CAS004001) and other interested persons are encouraged to participate in this meeting.

California Environmental Protection Agency



Our mission is to preserve and enhance the quality of California's water resources for the benefit of present and future.

**Public Workshop
July 29, 2009 at 10:00 AM
California Regional Water Quality Control Board, Los Angeles Region
320 W. 4th Street, 1st Floor Carmel Room
Los Angeles, CA 90013**

If you are unable to participate, please submit suggestions in writing prior to the workshop. Written comments should be sent no later than **5:00 PM on July 28, 2009** to the attention of:

**Ivar Ridgeway
Storm Water Permitting Unit
California Regional Water Quality Control Board, Los Angeles Region
320 W. 4th Street, Suite 200
Los Angeles, CA 90013**

If you have any questions about this matter, please contact Ivar Ridgeway at (213) 620-2150 or Dr. Ginachi Amah at (213) 576-6685.



Operating Eng Pension Trust
100 E Corson St
Pasadena, CA 91103

Schilbrack Karen G
6993 Wheeler Canyon Rd
Santa Paula, CA 93060

Williams Elizabeth L Et Al
401 Balsa St
La Grande, OR 97850

Lim Basilio Y-Rosie C Tr
14716 Mar Vista St
Whittier, CA 90605

Santa Monica BayKeeper
120 Broadway, Suite 105
Santa Monica, CA 90401

Pinneo William F-Sandra A
15498 Laypeyre Ct
Moorpark, CA 93021

Department Fish & Game
1416 9th Street
Sacramento, CA 95814

Director
State Lands Commission
100 Howe Ave, Suite 100 South
Sacramento, CA 95825-8202

Director
Department of Parks and Recreation
1416 9th Street
Sacramento, CA 95814

Ken E Andrews & Co
Nuevo Energy Inc
Po Box 870849
Mesquite, TX 75187-0849

St Georges Farm
Broadway Farms
10700 Broadway Rd
Moorpark, CA 93021

Rodney A. Andersen
City of Burbank
275 East Olive Avenue, P.O. Box 6459
Burbank, CA 91510-6459

Robert Berlien
USGVMWD
11310 Valley Blvd.
El Monte, CA 91731

Stephen Bledsoe
Southern California Rock Products
P.O. Box 40
South Pasadena, CA 91030

Peter Brand
State of California Coastal Conservancy
1330 Broadway, Ste. 1100
Oakland, CA 94612

Mike Chrisman
Resoures Agency
Office of the Secretary
1416 Ninth Street, Suite 1311
Sacramento, CA 95814

Tina Clark
City of Monterey Park
320 W. Newmark Avenue
Monterey Park, CA 91754

Ray Dewit
LA Dewit Consultant
2054 Bluerock Circle
Concord, CA 94521-1672

Richards K. Farnham
917 24th Street
Santa Monica, CA 90403-2105

Wendy M. Gilley
2216 Belmont Lane
Redondo Beach, CA 90278

Mark Gold
Heal the Bay
1444 9th Street
Santa Moncia, CA 90401

Robert S. Grove
Southern California Edison
P.O. Box 800
2244 Walnut Grove Ave
Rosemead, CA 91770

Adel H. Hagekhalil
City of Los Angilees
1149 S. Broadway 10th Floor
Los Angeles, CA 90015

Dave Hall
Heal the Bay/Surfrider Foundation
4077 Berryman Avenue
Los Angeles, CA 90066

Robert Hoffman
National Marine Fisheries Service
501 W. Ocean Blvd., Ste. 4200
Long Beach, CA 90802

Tony Hotchkiss
29212 Heathercliff Road
Malibu, CA 90265

Geraldine Knatz
Port of Long Beach
P.O. Box 151
San Pedro, CA 90731

Ying Kwan
City of LaCanada
1327 Foothill Blvd
La Canada Flintridge, CA 91011-2137

Lily Lee
Waste Management, Inc.
9081 Tujunga Avenue
Sun Valley, CA 91352

Brian Mastin
Cemex
P.O. Box 4120
Ontairo, CA 91761-1067



Susan McCabe
Rose & Kindel
900 Wilshire Blvd., Ste. 1030
Los Angeles, CA 90017

Lois K. Miyashiro
Pillsbury Winthrop Shaw Pittman
P.O. Box 7880
San Francisco, CA 94120-7880

Michael A. Montgomery
Los Angeles County, DPW
900 S. Fremont, 4th Floor
Alhambra, CA 91802-1460

Sherwood Natsuhara
City of Vernon
4305 Santa Fe Ave
Vernon, CA 90058

Terri Nevins
State of California Coastal Conservancy
1330 Broadway, Ste. 1100
Oakland, CA 94612

William Newsom
Newsom, William
8330 S. Catalina Ave.
Whittier, CA 90602

Jeffrey Nunn
California Domestic Water Co.
P.O. Box 1338
Whittier, CA 90603

Bill Paznokas
California Department of Fish and Game
4949 View Ridge Avenue
San Diego, CA 92123

Rod Phillips
2346 Greenfield Ave
West Los Angeles, CA 90064

Robert C. Pinkerton
Pinkerton Farms
15716 W. Santa Paula St.
Santa Paula, CA 93060

Rafael Prieto
City of Los Angeles
200 N. Spring St Room 255
Los Angeles, CA 90012

Alan Sanders
Sierra Club Los Padres Chapter
232 North Third
Port Hueneme, CA 93041

Dwight E. Sanders
California State Lands Commission
100 Howe Ave, Suite 100 South
Sacramento, CA 95825-8202

David W. Smith
U.S. EPA, Region IX
75 Hawthorne Street
San Francisco, CA 94105

Teresa K. Sweeney
Erler & Kalinowski, Inc.
1870 Ogden Drive
Burlingame, CA 94010-5306

Ali Tabidian
California State University
18111 Nordhoff Street
Northridge, CA 91330-8266

Lynn M. Takaichi
Kennedy Jenks Consultants
1000 Hill Road, Ste. 200
Ventura, CA 93003

Jane L. Valentine
UCLA, School of Public Health
10833 Le Conte Ave.
Los Angeles, CA 90095

Linda Vida
WRC Achieves
410 O'Brien Hall, UC Berkeley
Berkeley, CA 94720-1718

Bob Wu
CalTrans, District 7
100 S. Main Street
Los Angeles, CA 90012

LYRIS MAILING

LIST NAME: BASIN PLAN
 DATE MAILED: 7-6-09

DATEJOINED_	EMAILADDR_	FULLNAME_
4/23/2008 17:01	Adel.Hagekhalil@lacity.org	Adel H Hagekhalil
3/10/2005 10:12	DLaff@ladpw.org	Daniel J. Lafferty
12/31/2008 14:43	DWPierce@chevron.com	David W. Pierce
1/28/2008 12:48	DianaE@lwa.com	Diana Engle
6/16/2009 8:34	Doug.Peeler@sealaska.com	Douglas L. Peeler
1/5/2009 14:32	Eric_Lopez@longbeach.gov	Eric Lopez
9/12/2007 11:09	FGuerrero@lacsds.org	Francisco Guerrero
10/21/2005 6:54	Gary_Garofalo@dot.ca.gov	Gary Garofalo
11/2/2005 14:00	Gerhardt.Hubner@ventura.org	Gerhardt Hubner
12/19/2007 11:15	Hassan.Rad@lacity.org	Hassan rad
12/1/2004 14:54	JEndicott@aei-casc.com	Jeff Endicott
2/28/2005 16:05	JVALENTINE@CITYOFPASA	Jim Valentine
10/29/2008 3:05	Johnrdarnell@yahoo.com	John R. Darnell II
3/1/2005 11:45	MLansdell@ci.gardena.ca.us	Mitchell Lansdell
3/7/2005 14:37	MarkCapron@vrds.com	Mark E. Capron
3/11/2005 10:39	Melinda.Talent@ventura.org	Melinda Talent
3/4/2005 10:47	Nancy.Settle@Ventura.Org	Nancy Settle
1/21/2009 13:00	Oamoah@ladpw.org	Ofori Amoah
3/17/2005 20:27	RESOOCNI@VERIZON.NET	Irma Gallegos
3/4/2005 6:57	RKUBOMO@ladpw.org	Rod Kubomoto
3/1/2005 10:40	RWPearson@aol.com	Roger W. Pearson
3/2/2005 9:47	Ronald.Sheets@OjaiSan.org	Ronald Sheets
5/6/2009 12:17	Timothy_Hou@longbeach.gov	Timothy Hou
4/11/2006 14:14	Wing.Tam@lacity.org	Wing Tam
12/13/2005 9:31	adavis@rbf.com	Anne G. Davis
12/19/2005 11:22	adorablesam_4@yahoo.co.in	sam
6/3/2009 8:45	afarassati@cityofcalabasas.ca	Alex Farassati
5/7/2009 14:39	ahall@lacsds.org	Andrew Hall
3/1/2005 18:45	aharrington@ci.claremont.ca.	Andrea Harrington
12/17/2005 8:28	aheil@lacsds.org	Ann Heil
12/23/2008 15:59	ahenderson@biasec.org	Andrew Henderson
1/26/2009 14:07	ajirik@portla.org	Andrew Jirik
12/19/2006 13:14	akuhlman@ci.camarillo.ca.us	Anita Kuhlman
2/25/2009 7:32	alasso@dpw.lacounty.gov	Aracely Lasso
7/10/2007 14:38	alice.gordon@arcadis-us.com	Alice Gordon
9/8/2005 10:08	allen.camp@sfcoc.com	Allen F. Camp
1/28/2008 11:54	amys@lwa.com	Amy Storm
4/19/2006 4:26	annadbrat@yahoo.com	A Bee
7/2/2009 7:51	arleen.odonnell@erg.com	arleen odonnell
9/19/2007 22:15	arlene.hopkins@gmail.com	arlene hopkins
3/10/2009 13:53	aross@dpw.lacounty.gov	Andrew Ross
12/19/2006 13:10	ashlid@lwa.com	Ashli Desai
12/19/2006 10:11	asteele@lacsds.org	Alex Steele
9/7/2005 13:25	aubrey.baure@brooks.af.mil	Aubrey Baure
3/2/2005 13:11	barbara_klos@urscorp.com	Barbara A. Klos
3/7/2005 13:11	barry.snyder@amec.com	Barry J. Snyder
8/11/2008 17:19	barry@winefieldassoc.com	Barry White
11/17/2005 11:20	bbax@lacsds.org	Beth Bax
3/14/2005 9:14	bcarson@toaks.org	Robert Carson
12/31/2008 7:26	bdouglas@stone-env.com	Bruce Douglas
7/21/2008 12:25	bhelm@crystalstream.com	Brent A. Helm

3/1/2005 14:50	biniguez@bellflower.org	Bernardo Iniguez
6/23/2009 11:09	blanca@pacificcoastcivil.com	Blanca Hoffmeier
3/1/2005 11:07	bmichaelis@ci.san-dimas.ca.us	Blaine Michaelis
3/2/2005 12:01	bottorffm@verizon.net	Ron Bottorff
3/28/2005 15:13	boylehm@cdm.com	Heather Boyle
3/30/2005 15:39	bradmilner@kennedyjenks.co	Brad Milner
7/18/2008 10:38	brent.a.smith@amec.com	Brent Smith
5/6/2009 11:37	brent.mardian@amec.com	Brent Mardian
4/7/2009 6:53	bruceheyman@cox.net	Bruce Heyman
3/16/2005 9:48	bteaford@ci.burbank.ca.us	Bonnie Teaford
6/16/2009 10:52	btenner@smithtrager.com	Barbra Tenner
1/27/2009 15:34	byee@waterboards.ca.gov	Betty Yee
7/10/2006 15:14	ca3@imsinfo.com	Kimberly JOhnsn
12/8/2008 18:01	cabrera-stagno.valentina@ep	Valentina Cabrera
2/28/2005 21:25	calcropdoc@yahoo.com	David Holden
3/2/2005 7:13	canderson@ci.azusa.ca.us	Chet F. Anderson
5/4/2006 16:09	carla.cummings@westonsolu	Carla Cummings
9/5/2008 9:11	cbeegan@waterboards.ca.gov	chris beegan
10/9/2008 19:42	ccash@paramountcity.com	Christopher S.Cash
12/3/2008 15:20	cchang@waterboards.ca.gov	Cathy Chang
7/20/2006 15:30	charlie.yu@lacity.org	Charlie Yu
1/28/2009 8:41	chemicalengineer@cox.net	Walter Krostek
12/19/2006 13:43	chichen@ladpw.org	Chien-hao Chen
8/5/2008 8:27	chiggins@mines.edu	Christopher Higgins
5/9/2008 8:51	chrism@lwa.com	Chris Minton
3/1/2005 7:20	cinciong@ladpw.org	Carrie Inciong
5/30/2006 12:12	clayton.yoshida@ladwp.com	Clayton Yoshida
2/27/2008 17:49	clint.mcmahan@atcassociate	Clint McMahan
1/12/2007 8:20	cm_consulting@comcast.net	Cliff Moriyama
8/15/2006 15:07	cmitchell@mbcnet.net	Charles T. Mitchell
1/7/2009 16:36	courtney@wreassoc.net	Courtney Davis Nichols
2/28/2005 15:13	cperez@newhall.com	Cris Perez
12/2/2008 9:23	craig.anderson@noaa.gov	Craig Anderson
2/23/2006 9:23	cthrush@jacksonandperkins.c	Christine Thrush
3/19/2008 17:43	ctyrrell@pirnie.com	Catherine Tyrrell
7/17/2006 17:05	currunaga@waterboards.ca.g	Carlos Urrunaga
12/13/2007 16:07	cynthia_gabaldon@urscorp.c	Cynthia Gabaldon
1/31/2005 16:32	darrell.palma@scotts.com	E. Darrell Palma
3/6/2006 10:57	darrell.siegrist@ventura.org	Darrell Siegrist
3/1/2005 13:59	darrula@ci.sierra-madre.ca.us	Damien Arrula
12/19/2006 13:09	davidm@lwa.com	David Martinez
9/25/2006 14:44	dbechtold@targheeinc.com	Debbie Bechtold
5/28/2009 18:07	dboggs@croworld.com	Dave Boggs
3/4/2005 14:24	dburhenn@burhenngest.com	Dave Burhenn
3/1/2005 14:22	ddavis@ci.ventura.ca.us	Don Davis
4/21/2006 9:39	dezurawski@ucdavis.edu	Dale Zurawski
5/28/2009 11:40	dfranks@semprautilities.com	Dianne Franks
8/5/2008 12:43	dhock@rmcwater.com	Dawn Hock
4/2/2007 9:43	dlaff@dpw.lacounty.gov	Daniel J. Lafferty
10/9/2008 10:35	dleachman@lacsds.org	Debra Leachman
3/2/2005 13:42	dlippman@lvnmwd.com	david lippman
3/1/2005 9:35	dliu@environcorp.com	David Liu

11/28/2007 12:54	dmcalister@geotransinc.com	David McAlister
9/23/2005 9:12	dnarrieta@aol.com	David Arrieta
10/21/2008 9:39	donald.hurdle@sce.com	Donald Hurdle
2/28/2008 17:33	dparkinson@geosyntec.com	David Parkinson
5/11/2009 10:03	dpatrick@angelusblock.com	Dennis Patrick
2/28/2005 9:05	earl.lapensee@rcslade.com	Earl LaPensee
6/3/2009 14:11	ecamster@yahoo.com	Camie Pickett
6/4/2008 10:08	edward@lasgrwc.org	Edward Belden
3/3/2005 8:38	ekiepke@willdan.com	Elroy Kiepke
1/5/2007 11:53	engrnish@aol.com	David Nishimura
9/12/2006 14:36	ewu@waterboards.ca.gov	Eric Wu
6/19/2009 14:47	ezernik@sigmaengineeringinc	Elizabeth Zernik
11/26/2007 15:37	farhana.mohamed@lacity.org	Farhana Mohamed
3/29/2005 16:00	fdryden@juno.com	Franklin D. Dryden
1/21/2009 9:33	fgonzal@dpw.lacounty.gov	Fred A. Gonzalez
3/22/2005 12:07	fkrieger@msn.com	Fred Krieger
3/3/2005 15:51	fleming.terrence@epa.gov	Terrence Fleming
6/9/2008 15:47	gamah@waterboards.ca.gov	Ginachi Amah
8/29/2007 16:19	gamenu@dpw.lacounty.gov	Geremew G. Amenu
4/22/2009 8:41	gba3@nyu.edu	Gerald Asare Bempong
3/10/2009 21:05	gchavez@ci.norwalk.ca.us	Grissel Chavez
10/5/2006 10:00	ggreene@downeyca.org	Gerald Greene
9/27/2005 11:34	gilw@lwa.com	Gil Wheeler
9/14/2006 13:40	gmusejr@mwdh2o.com	George W. Muse Jr.
8/18/2005 15:54	greg.hyatt@iwpnews.com	Greg Hyatt
1/16/2007 8:05	gvillarreal@rbf.com	Gian Villarreal
3/2/2005 16:00	hashimoto.janet@epa.gov	Janet Hashimoto
1/6/2006 14:08	hazem.gabr@sce.com	Hazem Gabr
4/25/2006 14:31	hgallardy@ladpw.org	Heather Gallardy
6/22/2007 18:29	hgest@burhenngest.com	Howard Gest
10/10/2007 12:25	hlundborg@waterboards.ca.g	Holly Lundborg
11/17/2005 11:07	houstgrp@pacbell.net	Laura Cottrell
2/5/2009 8:20	hubertus.cox@lacity.org	Hubertus H.J. Cox
6/5/2008 11:06	hwylie1@hotmail.com	Heather Wylie
5/11/2009 14:57	james.m.phelan@exxonmobil	James Phelan
4/6/2009 19:07	janswift@live.com	jan andrew swift
10/6/2006 11:32	jbelle@mwdh2o.com	Janet Bell
3/24/2008 14:26	jchien@parks.lacounty.gov	Jui Ing chien
3/18/2005 12:58	jcowan@cityofalhambra.org	James Cowan
5/9/2006 12:33	jcox@waterboards.ca.gov	Joanne Cox
7/22/2005 12:08	jcrisolo@dhs.ca.gov	Joseph Crisologo
4/29/2008 8:08	jcruz@dpw.lacounty.gov	Jemellee Cruz
3/3/2005 11:08	jcruz@ladpw.org	Jemellee Cruz
3/2/2005 10:56	jdeakin@simivalley.org	Joe Deakin
4/30/2009 14:41	jdonatucci@kleinfelder.com	John Donatucci
8/6/2008 15:41	jdougall@lvmd.com	Jan Dougall
12/17/2008 15:24	jdreher@rinconconsultants.co	John Dreher
3/4/2005 10:31	jeff.mack@smgov.net	Jeff Mack
4/13/2007 16:56	jfordyce@waterboards.ca.gov	Jennifer Fordyce
3/1/2005 14:53	ygibson@torrnet.com	Jeffery W. Gibson
1/25/2006 7:47	ygully@lacsds.org	Joseph R. Gully
3/1/2005 9:21	jhall@waterboards.ca.gov	Jessica Hall

2/28/2005 14:44	jhuff@wpinc.com	John Huff
3/2/2005 16:53	jhunter@jlha.net	John Hunter
7/13/2005 13:30	jjensen@waterboards.ca.gov	Joanna Jensen
3/1/2005 10:54	jkelly@toaks.org	JoAnne Kelly
12/19/2006 13:38	jmorton@igc.org	Jess Morton
3/4/2005 9:54	jmundy@lvmwd.com	John R. Mundy
7/21/2005 9:10	jnewman@waterboards.ca.gov	Jenny Newman
2/22/2008 13:37	jogata@waterboards.ca.gov	Jeffery Ogata
3/1/2005 15:07	jranells@ci.la-verne.ca.us	JR Ranells
3/8/2005 10:51	jreinhardt@lvmwd.com	Jeff Reinhardt
4/15/2008 16:20	jrodrig@dpw.lacounty.gov	Janet Rodriguez
1/7/2009 14:08	jrj@astound.net	John Peterson
2/26/2008 13:41	jsickenger@ka-pow.com	Jeff Sickenger
4/14/2005 12:52	jtruhan@mwdh2o.com	Joyce T. Clark
4/5/2007 16:20	justin@calcattlemen.org	Justin Oldfield
4/21/2009 21:02	jweiner.venturacoastkeeper@	Jason Weiner
5/16/2005 7:40	jwoolf@rainforrent.com	Joel Woolf
11/5/2008 17:07	kathleen.bullard@tetrattech.cc	Kathleen Bullard
3/15/2005 14:42	kathleen.enve@verizon.net	Kathleen McGowan
3/2/2009 11:26	kbrophy@gswater.com	Katherine Brophy
10/26/2005 7:52	kchapman@93060.com	Ken Chapman
6/15/2006 16:08	ken.franklin@lacity.org	Kenneth Franklin
8/29/2008 12:59	kerickson@rmcwater.com	Kraig Erickson
10/23/2006 16:00	kfarfsing@cityofsignalhill.org	Kenneth C. Farfsing
4/21/2008 14:01	kgwells@earthlink.net	Kurt Wells
3/8/2005 15:09	kharris@waterboards.ca.gov	Ken Harris
4/28/2009 14:36	khoffman@lacsds.org	Ken Hoffman
8/1/2007 12:09	kim.lesniak@shell.com	Kimberly Lesniak
9/26/2006 23:35	kimo@pukashell.net	A. Kimo Morris Ph.D.
5/19/2008 16:42	kjames@healthebay.org	Kirsten James
7/24/2006 11:31	kkatona@lacbos.org	Karly Katona
3/3/2005 9:18	kkeeling@bonterraconsulting.	Kristin Keeling
2/7/2007 19:44	kmheim@ucla.edu	Karyn M. Heim
11/28/2006 13:07	koletty@usc.edu	Stephen Koletty PhD
3/24/2005 14:34	kprickett@portla.org	Kat Prickett
3/14/2007 16:53	krubin@ladwp.com	Katherine Rubin
10/11/2005 15:34	ksusilo@geosyntec.com	Ken Susilo
5/22/2006 12:45	kthompson@mail.wqa.org	Kelley Thompson
3/12/2009 12:29	kwang@waterboards.ca.gov	Kangshi Wang
6/1/2009 14:03	lakesidemediamedia@earthlink.net	Timothy Bramet
3/8/2005 7:43	lance.baroldi@claytonindustri	Lance Baroldi
2/12/2007 10:18	laurie_solis@urscorp.com	laurie solis
9/29/2005 10:09	laustin@geosyntec.com	Lisa Austin
3/2/2005 16:36	lbehjan@simiValley.org	Laura Behjan
5/12/2009 14:13	lbond@rwglaw.com	Lisa Bond
3/3/2005 17:10	lcessna@torrnet.com	Linda Cessna
2/13/2007 9:52	leighanner@westbasin.org	Leighanne Reeser
12/20/2006 15:37	leo@wecklabs.com	Leo Raab
1/23/2006 15:45	leoj@saic.com	Jonathan S. Leo
3/18/2009 15:53	lesliejdaigle@aol.com	Leslie Daigle
9/20/2006 8:23	lhornik@torrnet.com	Loriana Hornik
8/31/2007 16:17	lilysbaldwin@chevron.com	Lily S. Baldwin

1/23/2008 13:32	lindaestrin@gmail.com	LG estrin
12/19/2006 13:40	lisa.carlson@lacity.org	Lisa Carlson
2/28/2005 10:13	llarsen@rbf.com	Laura Larsen
1/19/2005 10:42	lmartinez@biasc.org	Lisa Martinez
12/19/2006 13:14	lmcgovern@ci.camarillo.ca.us	Lucia McGovern
5/5/2009 12:04	lmckenney@rbf.com	Larry McKenney
10/4/2006 15:48	lnye@waterboards.ca.gov	L. B. Nye
2/28/2005 11:12	lorettac@ci.irwindale.ca.us	Loretta Corpis
6/8/2005 15:05	lwarios@hotmail.com	Lisa Larios
4/14/2006 8:03	malibugrants@aol.com	Barbara A. Cameron
12/5/2007 12:43	mas.dojiri@lacity.org	Masahiro Dojiri
7/24/2007 9:46	masoliman@dpw.lacounty.gov	Maged Soliman
10/18/2005 9:54	mbaker@crglabs.com	Mark D. Baker
12/28/2004 12:15	mbiedebach@wcnviro.com	Mike Biedebach
7/11/2006 16:12	mcohen@rwglaw.com	Matthew Cohen
11/8/2007 17:17	mdannucci@pirnie.com	Michael D'Annucci
3/4/2008 10:22	meino.mittelstedt@yahoo.de	meino.mittelstedt
6/29/2009 8:30	melissa.pena@ralphs.com	Melissa Pena
7/5/2006 18:34	mercadojanet@sbcglobal.net	Janet Mercado
4/2/2007 15:01	mgoode@waterboards.ca.gov	Mitchell Goode
9/4/2007 11:15	mgrey@biasc.org	Mark Grey
1/21/2009 11:57	mharrison@diamondwest.net	Mike Harrison
1/19/2009 18:15	michael.a.beasley@boeing.cc	Michael Beasley
3/1/2005 10:07	mike.shay@redondo.org	Michael Shay
10/19/2005 14:39	mike@wspace.org	Mike Wang
3/9/2005 21:13	mkirrene@verizon.net	Michael J. Kirrene
3/3/2005 10:09	mlcoffee@nossaman.com	Mary Lynn Coffee
7/12/2006 16:21	mlevy@waterboards.ca.gov	Michael Levy
7/16/2008 8:36	mmednick@eri-us.com	michael jerome mednick
3/6/2009 12:10	mmehta@nrdc.org	Michelle Mehta
1/10/2008 10:13	mmulkerin@bwslaw.com	Mark Mulkerin
3/10/2009 5:44	mpalmer@demaximis.com	Michael Palmer
1/25/2006 18:01	mpestrel@ladpw.org	Mark Pestrella
3/26/2007 14:40	mpeterson@kpcc.org	Molly Peterson
7/10/2008 14:08	mpetroni@verizon.net	Matthew Petroni
1/23/2007 13:12	mpoole@nossaman.com	Melissa Poole
3/4/2005 14:59	mrnolan@socal.rr.com	Nolan Farkas
3/1/2005 9:27	msubbotin@newhall.com	Mark Subbotin
3/11/2009 11:25	msullivan@lacsds.org	Michael Sullivan
9/23/2004 12:04	mtaylor@bna.com	Matthew Taylor
10/31/2006 10:24	mvoong@waterboards.ca.gov	Man Voong
12/4/2006 11:00	mzulauf@irisenv.com	Michelle Zulauf
5/1/2008 16:49	nancy@lasgrwc.org	Nancy Steele
10/30/2007 13:56	nchung@portia.org	Nancy Chung
11/29/2006 11:09	neal.shapiro@smgov.net	Neal Shapiro
12/18/2008 8:09	nisheeth.kakarala@gmail.com	Nisheeth Kakarala
10/15/2007 8:09	nmartorano@waterboards.ca.	Nicholas Martorano
2/6/2009 17:43	olivia@malibutimes.com	Olivia Damavandi
10/14/2008 11:33	patrick.vowell@gswater.com	Patrick Vowell
7/14/2008 7:36	paul.cobian@lacity.org	Paul S. Cobian
9/23/2005 9:17	paul.tantet@ventura.org	Paul Tantet
7/24/2007 16:26	penny.weiand@lacity.org	Penny Weiand

5/20/2009 11:51	peter.gutierrez@lw.com	Peter J. Gutierrez
5/21/2007 15:08	peterson@polb.com	Lee Peterson
5/9/2006 13:52	pjenkin@sbcglobal.net	Paul Jenkin
3/8/2005 8:39	pjohansen@portla.org	Paul Johansen
9/5/2007 9:29	pmarkle@iacsd.org	Philip Markle
8/16/2005 14:27	pmcgaw@archernorris.com	Peter W. McGaw
8/26/2008 13:58	prandall@envirosolve.com	Patrick Randall
7/21/2008 9:25	prevere@rbf.com	Patrick Revere
3/27/2009 16:46	randerson@waterboards.ca.g	Robert Admin Anderson
3/11/2005 11:47	rbraden@sfcity.org	Robert M. Braden
12/19/2006 13:12	rbradley@ci.ventura.ca.us	Richard Bradley
1/27/2006 11:04	rchristmann@waterboards.ca	Rebecca Christmann
6/9/2009 10:25	rdalfarra@sespeconsulting.co	Rob DalFarra
3/2/2005 11:13	reb@bry.com	Robert E. Boston
11/2/2008 7:00	regulatory_updates@placerc	Anthony Choi
4/18/2008 6:56	rguerriero@edge-dev.com	ron guerriero
6/20/2007 10:56	rhorton@nossaman.com	Robert Horton
8/1/2007 10:04	rich_bailey@dot.ca.gov	Richard Bailey
4/28/2006 8:51	richard.a.haimann@mwhglob	Richard Haimann
3/1/2005 9:15	rkruger@monrovia.com	Reiner Kruger
6/21/2009 14:31	rijenk4979@earthlink.net	Richard L. Jenkins
11/19/2007 14:17	rmanwill@toaks.org	Ron Manwill
7/2/2008 8:22	rnack@ci.camarillo.ca.us	reg4_tmdl_c
4/13/2005 14:33	robert_wu@dot.ca.gov	Hsiao-Bai (Bob) Wu
3/7/2005 7:30	roger.james@worldnet.att.net	Roger B James
4/4/2005 7:39	roton@lvmwd.com	Randal Orton
7/14/2008 9:03	royallmichael@yahoo.com	Michael Royall
7/11/2006 15:55	rsams@waterboards.ca.gov	Robert Sams
2/28/2005 16:10	sarinamoraleschoate@santaf	Sarina Morales-Choate
4/18/2007 9:25	sbeltran@allenmatkins.com	Shanda Beltran
3/7/2005 11:28	sbrotten@icfconsulting.com	Scott Broten
4/13/2009 15:53	scarlson@dfg.ca.gov	Sean Carlson
3/10/2005 11:15	scottquady@vrsd.com	Scott Quady
2/19/2008 16:05	severitt@chevron.com	Everitt, Sara W
11/5/2008 9:29	shawn.hagerty@bbklaw.com	Shawn Hagerty
2/28/2005 17:29	shellis@lwa.com	Shelli St.Clair
9/23/2008 10:43	skelley@waterboards.ca.gov	Sandra Kelley
7/1/2004 11:44	snasserie@waterboards.ca.g	Susana Nasserie
5/6/2009 18:08	sndworsky@gmail.com	Susan Dworsky
2/28/2005 10:33	spaulsen@flowscience.com	Susan C. Paulsen Ph.D. P.E.
4/12/2007 11:02	sschaes@ladpw.org	T Scott Schales
3/7/2005 8:36	steve.granade@navy.mil	Steve Granade
3/3/2005 13:11	stuber.robyn@epa.gov	Robyn A. Stuber
3/2/2005 9:44	susanstark10@sbcglobal.net	Susan Stark
1/6/2005 15:15	tbilezikjian@rbf.com	Tanya Bilezikjian
12/19/2006 13:11	tdavis@ci.moorpark.ca.us	Teri Davis
11/1/2007 9:59	tegoscue@waterboards.ca.gc	Tracy Egoscue
8/23/2007 10:43	tgaur@smbaykeeper.org	Tatiana K. Gaur
8/13/2008 6:30	tmoon@dpw.lacounty.gov	TJ Moon
4/12/2006 12:46	tmoorhouse@cleanlake.com	Thomas Moorhouse
1/5/2009 14:33	tnghuyen@waterboards.ca.gov	Thanhloan Nguyen
3/11/2009 12:21	tobymoore@gswater.com	Toby Moore

3/2/2005 11:01	toleary@longbeach.gov	Tom Leary
10/8/2008 11:29	tracyk@lwa.com	Tracy Krueger
8/26/2004 12:56	trodgers@waterboards.ca.gov	Theresa Rodgers
11/13/2007 11:28	tslifko@lacsds.org	Theresa Slifko
3/3/2005 9:08	tsmith@bonterraconsulting.co	Thomas E Smith Jr
3/11/2009 10:00	tweiland@lacsds.org	Thomas E. Weiland
3/24/2005 14:57	ummorow127@yahoo.com	Andrew Amorao
12/1/2008 10:22	vcastro@ci.covina.ca.us	Vivian Castro
2/15/2007 11:03	vhevener@lynwood.ca.us	Vanessa Hevener
10/26/2005 11:05	vlhaller@aol.com	Verne Haller
2/13/2009 14:27	vschneider@croworld.com	Jim Schneider
10/11/2006 14:13	wbotha@daley-heft.com	Wentzelee Botha
3/8/2006 10:23	william.venable@navy.mil	William Venable
1/10/2009 11:09	wlaton@aol.com	William Laton
7/10/2008 9:55	ysim@dpw.lacounty.gov	Youn Sim
4/4/2006 16:22	ysim@ladpw.org	Youn Sim
7/11/2006 7:25	zora.baharians@lacity.org	Zora Baharians

LYRIS MAILING

LIST NAME: BALLONA
 DATE MAILED: 7-6-09

DATEJOINED_	EMAILADDR_	FULLNAME_
9/27/2008 20:10	2tweet@gmail.com	Teresa Williams
4/23/2008 17:00	Adel.Hagekhalil@lacity.org	Adel H Hagekhalil
3/10/2005 10:12	DLaff@ladpw.org	Daniel J. Lafferty
12/31/2008 14:43	DWPierce@chevron.com	David W. Pierce
4/11/2006 14:03	Edgar.Saenz@mail.house.gov	Edgar Saenz
10/21/2005 6:54	Gary_Garofalo@dot.ca.gov	Gary Garofalo
12/1/2004 14:54	JEndicott@aei-casc.com	Jeff Endicott
1/15/2003 0:00	JohnB648@AOL.com	John Bullington
10/29/2008 3:05	Johnrdarnell@yahoo.com	John R. Darnell II
12/11/2007 12:52	Karen.Ciccione@ca.rr.com	Karen Palladino Ciccione
3/17/2005 20:27	RES0OCNI@VERIZON.NET	irma Gallegos
3/4/2005 6:57	RKUBOMO@ladpw.org	Rod Kubomoto
3/1/2005 10:40	RWPearson@aol.com	Roger W. Pearson
10/25/2004 8:31	Skennedy@enfact.net	Shiela Kennedy
4/11/2006 14:14	Wing.Tam@lacity.org	Wing Tam
5/24/2006 11:56	acor@ucla.edu	Alina Corcoran
12/13/2005 9:31	adavis@rbf.com	Anne G. Davis
12/19/2005 11:22	adorablesam_4@yahoo.co.in	sam
1/3/2001 0:00	aharrington@ci.claremont.ca.us	Andrea Harrington
12/17/2005 8:28	aheil@lacsdsd.org	Ann Heil
12/23/2008 15:59	ahenderson@biasc.org	Andrew Henderson
1/26/2009 14:07	ajirik@portla.org	Andrew Jirik
2/25/2009 7:32	alasso@dpw.lacounty.gov	Aracely Lasso
9/19/2007 22:15	arlene.hopkins@gmail.com	arlene hopkins
3/10/2009 13:57	aross@dpw.lacounty.gov	Andrew Ross
8/24/2006 15:29	arri@mtaonline.net	Jeffrey Davis
11/15/2005 12:22	ashlic@lwa.com	Ashli Desai
3/2/2005 13:11	barbara_klos@urscorp.com	Barbara A. Klos
3/7/2005 13:11	barry.snyder@amec.com	Barry J. Snyder
8/11/2008 17:19	barry@winefieldassoc.com	Barry White
7/21/2008 12:25	bhelm@crystalstream.com	Brent A. Helm
6/23/2009 11:10	blanca@pacificcoastcivil.com	Blanca Hoffmeier
9/24/2008 5:58	blueranch@earthlink.net	Andy Bristol
8/8/2007 14:09	bogorman@gswater.com	Brandy OGorman
3/28/2005 15:13	boylehm@cdm.com	Heather Boyle
5/6/2009 11:37	brent.mardian@amec.com	Brent Mardian
4/24/2009 11:21	brody@impactsociences.com	RC Brody
4/7/2009 6:53	bruceheyman@cox.net	Bruce Heyman
3/16/2005 9:48	bteaford@ci.burbank.ca.us	Bonnie Teaford
6/16/2009 10:52	btenner@smithtrager.com	Barbra Tenner
12/21/2000 0:00	bvlach@ciwmb.ca.gov	Bernard R. Vlach
9/20/2006 14:25	ca3@imsinfo.com	Cory R. Espinoza
12/8/2008 18:01	cabrera-stagno.valentina@epa.go	Valentina Cabrera
5/4/2006 16:09	carla.cummings@westonsolutions	Carla Cummings
9/5/2008 9:11	cbeegan@waterboards.ca.gov	chris beegan
12/3/2008 15:20	cchang@waterboards.ca.gov	Cathy Chang
7/20/2006 15:30	charlie.yu@lacity.org	Charlie Yu
8/5/2008 8:27	chiggins@mines.edu	Christopher Higgins
5/9/2008 8:51	chrism@lwa.com	Chris Minton
1/15/2009 13:07	chrlee@ucla.edu	Christine Lee
3/1/2005 7:20	cinciong@ladpw.org	Carrie Inciong

2/28/2005 13:13	cleanwater@sfo.com	Daniel Cooper
10/4/2006 9:09	cmitchell@mbcnet.net	Charles T. Mitchell
8/1/2002 0:00	collins-6666@msn.com	J. Roger Collins
1/7/2009 16:36	courtney@wreassoc.net	Courtney Davis Nichols
2/28/2005 15:13	cperez@newhall.com	Cris Perez
12/2/2008 9:23	craig.anderson@noaa.gov	Craig Anderson
6/1/2006 8:25	csaylan@earthlink.net	charles saylan
3/19/2008 17:43	ctyrrell@pirnie.com	Catherine Tyrrell
7/17/2006 17:05	currunaga@waterboards.ca.gov	Carlos Urrunaga
3/13/2007 14:10	dapt@rbf.com	Daniel Apt
5/28/2009 18:07	dboggs@craworld.com	Dave Boggs
3/4/2005 14:24	dburhenn@burhenngest.com	Dave Burhenn
2/13/2007 9:57	deana@aquabiocleanup.com	Deana Vitela
3/14/2008 10:14	dhock@rmcwater.com	Dawn Hock
5/17/2001 0:00	djwri@hotmail.com	Dan Wright
10/9/2008 10:35	dleachman@lacs.org	Debra Leachman
9/15/2007 18:02	dnallohdivad@ca.rr.com	David Holland
9/23/2005 9:12	dnarrieta@aol.com	David Arrieta
3/17/2006 14:34	donna.chen@lacity.org	Donna Chen
2/28/2008 17:33	dparkinson@geosyntec.com	David Parkinson
3/31/2009 13:05	dromo@mztco.com	Diana Romo
2/28/2005 9:05	earl.lapensee@rcslade.com	Earl LaPensee
6/4/2008 10:08	edward@lasgrwc.org	Edward Belden
2/6/2009 20:25	eugene.allevato@woodbury.edu	Eugene Allevato
5/23/2008 9:31	ewakefield@waterboards.ca.gov	Elisha Wakefield
9/12/2006 14:36	ewu@waterboards.ca.gov	Eric Wu
11/26/2007 15:37	farhana.mohamed@lacity.org	Farhana Mohamed
2/19/2009 13:17	fbardol@msn.com	francois BARDOL
4/5/2005 9:52	fchin@ladpw.org	Frank Chin
9/26/2005 23:43	fkrieger@msn.com	Fred Krieger
3/3/2005 15:51	fleming.terrence@epa.gov	Terrence Fleming
7/7/2006 16:27	gamah@waterboards.ca.gov	Ginachi Amah
8/29/2007 16:19	gamenu@dpw.lacounty.gov	Geremew G. Amenu
8/6/2002 0:00	gary.wortham@tetrattech.com	Gary Wortham
10/22/2007 7:34	geoff@brosseau.us	Geoff Brosseau
8/15/2005 13:52	gfrantz@waterboards.ca.gov	Greg Frantz
12/5/2005 10:35	gfredlee@aol.com	G. Fred Lee
10/5/2006 10:00	ggreene@downeyca.org	Gerald Greene
5/30/2006 10:34	ghaseg3112@aol.com	Glen Hasegawa
3/9/2005 10:45	ghildeb@ladpw.org	Gary Hildebrand
1/22/2002 0:00	gilw@lwa.com	Gil Wheeler
9/14/2006 13:40	gmusejr@mwdh2o.com	George W. Muse Jr.
10/6/2004 8:54	gogos0@bp.com	Stefan Gogosha
1/16/2007 8:05	gvillarreal@rbf.com	Gian Villarreal
3/2/2005 16:00	hashimoto.janet@epa.gov	Janet Hashimoto
4/25/2006 14:31	hgallardy@ladpw.org	Heather Gallardy
6/22/2007 18:29	hgest@burhenngest.com	Howard Gest
11/17/2005 11:07	houstgrp@pacbell.net	Laura Cottrell
10/10/2006 10:57	hschillinger@kristar.com	Hal Schillinger
2/5/2009 8:20	hubertus.cox@lacity.org	Hubertus H.J. Cox
8/24/2007 14:47	huffamoose2k@yahoo.com	Casey Huffman
6/12/2008 8:14	hugo.bermudez@nassco.com	Bermudez, Hugo

2/6/2009 9:13	ihshanhsu.yeh@lacity.org	Yvonne Yeh
4/6/2009 19:07	janswift@live.com	jan andrew swift
12/7/2006 17:28	jbelle@mwdh2o.com	Janet Bell
1/12/2005 11:15	jbishop@waterboards.ca.gov	Jonathan Bishop
3/24/2008 14:26	jchien@parks.lacounty.gov	Jui Ing chien
5/1/2008 8:45	jcho@lvmwd.com	JIMMIE CHO
5/9/2006 12:33	jcox@waterboards.ca.gov	Joanne Cox
4/29/2008 8:08	jcruz@dpw.lacounty.gov	Jemellee Cruz
3/3/2005 11:08	jcruz@ladpw.org	Jemellee Cruz
4/30/2009 14:41	jdonatucci@kleinfelder.com	John Donatucci
12/17/2008 15:24	jdreher@rinconconsultants.com	John Dreher
4/13/2007 16:56	jfordyce@waterboards.ca.gov	Jennifer Fordyce
1/25/2006 7:47	gjully@lacsdsd.org	Joseph R. Gully
3/1/2005 9:21	jhall@waterboards.ca.gov	Jessica Hall
3/2/2005 16:53	jhunter@jlha.net	John Hunter
4/12/2006 14:14	jim.lamm@ballonacreek.org	Jim Lamm
7/13/2005 10:08	jjensen@waterboards.ca.gov	Joanna Jensen
3/4/2005 9:54	jmundy@lvmwd.com	John R. Mundy
7/21/2005 9:10	jnewman@waterboards.ca.gov	Jenny Newman
10/12/2005 12:51	john.craig@tetrattech-ffx.com	John Craig
7/16/2004 13:29	jprice@waterboards.ca.gov	Jack Price
4/15/2008 16:20	jrodrig@dpw.lacounty.gov	Janet Rodriguez
3/4/2005 12:40	jskelley@socal.rr.com	Joseph Skelley
1/24/2006 16:50	jtopel@waterboards.ca.gov	Jack Topel
4/5/2007 16:20	justin@calcattlemen.org	Justin Oldfield
1/22/2009 7:56	jzane@wcviro.com	Jeffrey Zane
11/5/2008 17:07	kathleen.bullard@tetrattech.com	Kathleen Bullard
3/15/2005 14:42	kathleen.enve@verizon.net	Kathleen McGowan
3/2/2009 11:26	kbrophy@gswater.com	Katherine Brophy
6/15/2006 16:08	ken.franklin@lacity.org	Kenneth Franklin
8/29/2008 12:59	kerickson@rmcwater.com	Kraig Erickson
10/23/2006 16:00	kfarfsing@cityofsignalhill.org	Kenneth C. Farfsing
3/8/2005 15:09	kharris@waterboards.ca.gov	Ken Harris
4/28/2009 14:36	khoffman@lacsdsd.org	Ken Hoffman
9/26/2006 23:35	kimo@pukashell.net	A. Kimo Morris Ph.D.
5/19/2008 16:42	kjames@healthebay.org	Kirsten James
6/22/2004 12:29	kjones@dot.ca.gov	Keith Jones
3/3/2005 9:18	kkeeling@bonterraconsulting.com	Kristin Keeling
11/7/2007 12:45	kmorris@lacsdsd.org	A. Kimo Morris
11/28/2006 13:07	koletty@usc.edu	Stephen Koletty PhD
4/28/2005 13:15	kozelka.peter@epa.gov	Peter Kozelka
3/24/2005 14:34	kprickett@portla.org	Kat Prickett
3/14/2007 16:53	krubin@ladwp.com	Katherine Rubin
10/11/2005 15:34	ksusilo@geosyntec.com	Ken Susilo
5/22/2006 12:45	kthompson@mail.wqa.org	Kelley Thompson
2/12/2007 10:18	laurie_solis@urscorp.com	laurie solis
9/29/2005 10:09	laustin@geosyntec.com	Lisa Austin
5/12/2009 14:13	lbond@rwglaw.com	Lisa Bond
2/13/2007 9:52	leighanner@westbasin.org	Leighanne Reeser
12/20/2006 15:37	leo@wecklabs.com	Leo Raab
4/8/2008 15:05	leon-guerrero.ephraim@epa.gov	Ephraim D. Leon-Guerrero
9/20/2006 8:23	lhornik@torrnet.com	Loriana Hornik

9/11/2008 10:09	lin.cindy@epa.gov	Cindy Lin
1/23/2008 13:32	lindaestrin@gmail.com	LG estrin
2/7/2001 0:00	lisa.williams@lsa-assoc.com	Lisa Williams
11/9/2004 14:20	liyingxia@hotmail.com	sunny li
4/2/2004 13:13	llarsen@rbf.com	Laura Larsen
1/19/2005 10:42	lmartinez@biasc.org	Lisa Martinez
5/5/2009 12:05	lmckenney@rbf.com	Larry McKenney
10/4/2006 15:48	lnye@waterboards.ca.gov	L. B. Nye
2/28/2005 11:12	lorettac@ci.irwindale.ca.us	Loretta Corpis
2/24/2009 15:16	lrockett@dpw.lacounty.gov	Laura Rockett
7/17/2008 9:48	maricela1977@yahoo.com	Maricela Gomez
3/17/2005 14:19	mariki@ladpw.org	Menerva Arika
1/18/2002 0:00	marym@water.ca.gov	Mary M. Miller
12/5/2007 12:43	mas.dojiri@lacity.org	Masahiro Dojiri
7/24/2007 9:46	masoliman@dpw.lacounty.gov	Maged Soliman
10/18/2005 9:54	mbaker@crglabs.com	Mark D. Baker
1/12/2005 11:15	mbecker@waterboards.ca.gov	Melinda Becker
7/11/2006 16:12	mcohen@rwglaw.com	Matthew Cohen
11/8/2007 17:17	mdannucci@pirnie.com	Michael D'Annucci
6/29/2009 8:30	melissa.pena@ralphs.com	Melissa Pena
1/19/2009 18:15	michael.a.beasley@boeing.com	Michael Beasley
3/3/2005 10:09	mlcoffee@nossaman.com	Mary Lynn Coffee
7/11/2006 13:49	mlevy@waterboards.ca.gov	Michael Levy
1/25/2006 18:01	mpestrel@ladpw.org	Mark Pestrella
3/26/2007 14:40	mpeterson@kpcc.org	Molly Peterson
4/4/2007 9:11	mpf@stateside.com	Melissa Patra Farmer
3/4/2005 14:59	mrnolan@socal.rr.com	Nolan Farkas
9/23/2004 12:04	mtaylor@bna.com	Matthew Taylor
6/9/2008 15:44	mvoong@waterboards.ca.gov	Man Voong
2/8/2007 9:35	nadadora79@hotmail.com	Laurel Fink
11/29/2006 11:09	neal.shapiro@smgov.net	Neal Shapiro
12/18/2008 8:09	nisheeth.kakarala@gmail.com	Nisheeth Kakarala
6/17/2008 13:55	nmartorano@waterboards.ca.gov	Nicholas Martorano
7/14/2008 7:36	paul.cobian@lacity.org	Paul S. Cobian
8/19/2008 14:15	pbarrowman@healthebay.org	Polly Barrowman
7/24/2007 16:26	penny.weiand@lacity.org	Penny Weiand
5/20/2009 11:51	peter.gutierrez@lw.com	Peter J. Gutierrez
10/24/2005 11:14	pgouveia@waterboards.ca.gov	Patricia Gouveia
9/5/2007 9:29	pmarkle@lacsds.org	Philip Markle
8/16/2005 14:27	pmcgaw@archernorris.com	Peter W. McGaw
2/24/2006 12:06	powerskj@yahoo.com	Kevin Powers
4/16/2006 0:31	pweinberger55@hotmail.com	Peter Weinberger
8/11/2008 13:07	rachelaschwartz@hotmail.com	Rachel A. Schwartz
2/16/2009 13:00	ralph2ortega@yahoo.com	ralph ortega
1/27/2006 11:04	rchristmann@waterboards.ca.gov	Rebecca Christmann
6/9/2009 10:25	rdalfarra@sespeconsulting.com	Rob DalFarra
5/18/2006 11:41	rexfrankel@yahoo.com	Rex Frankel
9/23/2005 9:31	rez1@earthlink.net	David Reznick
4/28/2006 8:51	richard.a.haimann@mwhglobal.co	Richard Haimann
8/15/2002 0:00	robert_wu@dot.ca.gov	Bob Wu
3/7/2005 7:30	roger.james@worldnet.att.net	Roger B James
7/14/2008 9:03	royallmichael@yahoo.com	Michael Royall

7/11/2006 13:49	rsams@waterboards.ca.gov	Robert Sams
5/27/2009 12:47	sadie.iverson.az@gmail.com	Sadie Iverson
4/18/2007 9:25	sbeltran@allenmatkins.com	Shanda Beltran
3/7/2005 11:28	sbrotten@icfconsulting.com	Scott Broten
4/24/2003 0:00	schroederdj@cdm.com	Donald Schroeder
1/3/2006 11:39	sewers@dslextreme.com	Anna Sklar
8/9/2005 19:51	sgreen@lacsds.org	Sharon N. Green
11/5/2008 9:29	shawn.hagerty@bbklaw.com	Shawn Hagerty
2/28/2005 17:29	shellis@lwa.com	Shelli St.Clair
9/23/2008 11:17	skelley@waterboards.ca.gov	Sandra Kelley
3/28/2005 15:36	smith.davidw@epa.gov	David W. Smith
10/5/2000 0:00	snasserie@waterboards.ca.gov	Susana Nasserie
5/29/2009 11:49	snespeca@percwater.com	Sharon Nespeca
2/25/2009 15:48	sp2nicholson@earthlink.net	Sonia Nicholson
2/28/2005 10:33	spaulsen@flowscience.com	Susan C. Paulsen Ph.D. P.E.
4/12/2007 11:02	sschaless@ladpw.org	T Scott Schales
3/2/2005 9:44	susanstark10@sbcglobal.net	Susan Stark
1/6/2005 15:15	tbilezikjian@rbf.com	Tanya Bilezikjian
10/31/2007 16:57	tegoscue@waterboards.ca.gov	Tracy Egoscue
12/11/2008 12:04	terrabelandscape@gmail.com	Paula Henson
8/23/2007 10:43	tgaur@smbaykeeper.org	Tatiana K. Gaur
8/13/2008 6:30	tmoon@dpw.lacounty.gov	TJ Moon
3/11/2009 12:21	tobymoore@gswater.com	Toby Moore
4/2/2007 12:04	tom@mediapage.com	Tom Kravitz
10/8/2008 11:29	tracyk@lwa.com	Tracy Krueger
10/5/2000 0:00	trodge@waterboards.ca.gov	Theresa Rodgers
11/13/2007 11:28	tslifko@lacsds.org	Theresa Slifko
4/22/2003 0:00	vconway@lacsds.org	Victoria O. Conway
10/11/2006 14:13	wbotha@daley-heft.com	Wentzelee Botha
11/18/2005 5:14	wfunderburk@sfcfirm.com	William Funderburk
7/10/2008 9:55	ysim@dpw.lacounty.gov	Youn Sim
4/4/2006 16:22	ysim@ladpw.org	Youn Sim
10/5/2006 14:49	zora.baharians@lacity.org	zora Baharians

LYRIS MAILING

LIST NAME: FMOLA
 DATE MAILED: 7-6-09

DATEJOINED_	EMAILADDR_	FULLNAME_
4/23/2008 17:00	Adel.Hagekhalil@lacity.org	Adel H Hagekhalil
4/21/2005 9:30	CRoberts@aaeinc.com	Cory Roberts
3/10/2005 10:12	DLaff@ladpw.org	Daniel J. Lafferty
12/31/2008 14:43	DWPierce@chevron.com	David W. Pierce
10/2/2008 3:14	ECOMOM2008@gmail.com	Christine L. Rowe
4/11/2006 14:03	Edgar.Saenz@mail.house.gov	Edgar Saenz
10/21/2005 6:54	Gary_Garofalo@dot.ca.gov	Gary Garofalo
6/12/2008 4:40	GlennBaileySFV@yahoo.com	Glenn Bailey
12/19/2007 11:15	Hassan.Rad@lacity.org	Hassan rad
12/1/2004 14:54	JEndicott@aei-casc.com	Jeff Endicott
10/26/2000 0:00	JHunter@JLHA.Net	John Hunter
2/28/2005 16:05	JVALENTINE@CITYOFPASAD	Jim Valentine
1/24/2008 8:11	James.Kirby@lisi-aerospace.us	James Kirby
1/15/2003 0:00	JohnB648@AOL.com	John Bullington
10/29/2008 3:05	Johnrdarnell@yahoo.com	John R. Darnell II
3/1/2005 11:45	MLansdell@ci.gardena.ca.us	Mitchell Lansdell
3/4/2005 6:57	RKUBOMO@ladpw.org	Rod Kubomoto
3/1/2005 10:40	RWPearson@aol.com	Roger W. Pearson
7/5/2007 16:25	Sara.Chung@bp.com	Sara Chung
4/25/2008 9:53	Susan.Palmas@ladwp.com	Susan Palmas
4/11/2006 14:14	Wing.Tam@lacity.org	Wing Tam
12/13/2005 9:31	adavis@rbf.com	Anne G. Davis
1/16/2009 9:38	adolfo.felix2@ladwp.com	Adolfo Felix
12/19/2005 11:22	adorablesam_4@yahoo.co.in	sam
6/3/2009 8:45	afarassati@cityofcalabasas.com	Alex Farassati
1/3/2001 0:00	aharrington@ci.claremont.ca.us	Andrea Harrington
12/17/2005 8:28	aheil@lacsds.org	Ann Heil
12/23/2008 15:59	ahenderson@biasec.org	Andrew Henderson
1/26/2009 14:07	ajirik@portla.org	Andrew Jirik
2/25/2009 7:32	alasso@dpw.lacounty.gov	Aracely Lasso
3/28/2005 13:31	amarsh@pirnie.com	Anita Marsh
1/28/2008 11:54	amys@lwa.com	Amy Storm
4/19/2006 4:26	annadbrat@yahoo.com	A Bee
9/19/2007 22:15	arlene.hopkins@gmail.com	arlene hopkins
3/10/2009 13:57	aross@dpw.lacounty.gov	Andrew Ross
12/28/2004 7:34	asaponara@treadwellrollo.com	Anthony Saponara
11/15/2005 12:22	ashlic@lwa.com	Ashli Desai
12/19/2006 10:11	asteele@lacsds.org	Alex Steele
9/7/2005 13:25	aubrey.baure@brooks.af.mil	Aubrey Baure
3/2/2005 13:11	barbara_klos@urscorp.com	Barbara A. Klos
3/7/2005 13:11	barry.snyder@amec.com	Barry J. Snyder
8/11/2008 17:19	barry@winefieldassoc.com	Barry White
11/17/2005 11:20	bbax@lacsds.org	Beth Bax
6/11/2009 16:38	bdingman@lvmwd.com	Brett Dingman
8/14/2008 9:02	bgresl@barnhart-heery.com	Robert Gresl
7/21/2008 12:25	bhelm@crystalstream.com	Brent A. Helm
6/23/2009 11:10	blanca@pacificcoastcivil.com	Blanca Hoffmeier
8/8/2007 14:09	bogorman@gswater.com	Brandy OGorman
3/28/2005 15:13	boylehm@cdm.com	Heather Boyle
3/30/2005 15:39	bradmilner@kennedyjenks.com	Brad Milner
5/6/2009 11:37	brent.mardian@amec.com	Brent Mardian

1/16/2007 13:46	bruce@oxy.edu	Bruce Steele
4/7/2009 6:53	bruceheyman@cox.net	Bruce Heyman
3/16/2005 9:48	bteaford@ci.burbank.ca.us	Bonnie Teaford
6/16/2009 10:52	btenner@smithtrager.com	Barbra Tenner
9/20/2006 14:25	ca3@imsinfo.com	Cory R. Espinoza
12/8/2008 18:01	cabrera-stagno.valentina@epa.gov	Valentina Cabrera
5/4/2006 16:09	carla.cummings@westonsolutio	Carla Cummings
5/8/2008 9:32	carlos.reyes@build-laccd.org	Carlos Reyes
10/9/2008 19:42	ccash@paramountcity.com	Christopher S.Cash
12/3/2008 15:20	cchang@waterboards.ca.gov	Cathy Chang
6/20/2009 9:52	cgrimes@mapleleaffarms.com	Cliff Grimes
3/18/2008 19:10	chardcastle@geomatrix.com	Calvin Hardcastle
7/20/2006 15:30	charlie.yu@lacity.org	Charlie Yu
12/19/2006 12:44	chichen@ladpw.org	Chien-hao Chen
8/5/2008 8:27	chiggins@mines.edu	Christopher Higgins
6/4/2002 0:00	chris@hydrologue.com	Chris D'sa
5/9/2008 8:51	chrism@lwa.com	Chris Minton
1/15/2009 13:07	chrlee@ucla.edu	Christine Lee
3/1/2005 7:20	cinciong@ladpw.org	Carrie Inciong
5/30/2006 12:12	clayton.yoshida@ladwp.com	Clayton Yoshida
2/28/2005 13:13	cleanwater@sfo.com	Daniel Cooper
4/4/2009 12:03	cls7912@lausd.net	Cynthia Stuckey
3/4/2008 13:58	cmeeker@cityofalhambra.org	Claudine Meeker
10/4/2006 9:09	cmitchell@mbcnet.net	Charles T. Mitchell
1/7/2009 16:36	courtney@wreassoc.net	Courtney Davis Nichols
2/28/2005 15:13	cperez@newhall.com	Cris Perez
12/2/2008 9:23	craig.anderson@noaa.gov	Craig Anderson
4/5/2005 8:39	csjoberg@ladpw.org	Carl W. Sjoberg
3/19/2008 17:43	ctyrrell@pirnie.com	Catherine Tyrrell
7/17/2006 17:05	currunaga@waterboards.ca.gov	Carlos Urrunaga
3/13/2007 14:10	dapt@rbf.com	Daniel Apt
3/1/2005 13:59	darrula@ci.sierra-madre.ca.us	Damien Arrula
6/2/2009 11:32	dave.a.rodriguez@gmail.com	David Rodriguez
12/10/2008 8:24	davidm@lwa.com	David Martinez
4/26/2006 12:09	davis_dan@interstatebrands.co	Daniel Davis
2/19/2004 14:05	dbechtold@targheeinc.com	Debra Bechtold
5/28/2009 18:07	dboggs@croworld.com	Dave Boggs
3/4/2005 14:24	dburhenn@burhenngest.com	Dave Burhenn
2/13/2007 9:57	deana@aquabiocleanup.com	Deana Vitela
3/14/2008 10:14	dhock@rmcwater.com	Dawn Hock
6/30/2009 11:22	dianae@lwa.com	Diana Engle
11/29/2006 9:14	dianne.sweeny@pillsburylaw.co	Dianne Sweeny
5/17/2001 0:00	djwri@hotmail.com	Dan Wright
3/2/2005 13:42	dlippman@lvmwd.com	david lippman
3/1/2005 9:35	dliu@environcorp.com	David Liu
9/15/2007 18:02	dnallohdivad@ca.rr.com	David Holland
9/23/2005 9:12	dnarrieta@aol.com	David Arrieta
3/17/2006 14:34	donna.chen@lacity.org	Donna Chen
3/18/2008 12:10	dpalmer@manatt.com	Dana P. Palmer
2/28/2008 17:33	dparkinson@geosyntec.com	David Parkinson
3/31/2009 13:05	dromo@mztco.com	Diana Romo
2/28/2005 9:05	earl.lapensee@rcslade.com	Earl LaPensee

6/3/2009 14:11	ecamster@yahoo.com	Camie Pickett
6/4/2008 10:08	edward@lasgrwc.org	Edward Belden
4/3/2002 0:00	ekiepke@willdan.com	Elroy Kiepke
10/16/2008 20:46	emepeter@yahoo.com	Peter Kim
1/5/2007 11:53	engrnish@aol.com	David Nishimura
7/12/2005 15:26	ernie.hahn@lw.com	Ernie Hahn
5/23/2008 9:31	ewakefield@waterboards.ca.gov	Elisha Wakefield
9/12/2006 14:36	ewu@waterboards.ca.gov	Eric Wu
6/19/2009 14:47	ezernik@sigmaengineeringinc.c	Elizabeth Zernik
11/26/2007 15:37	farhana.mohamed@lacity.org	Farhana Mohamed
4/5/2005 9:52	fchin@ladpw.org	Frank Chin
3/29/2005 16:00	fddryden@juno.com	Franklin D. Dryden
3/22/2005 12:07	fkrieger@msn.com	Fred Krieger
3/3/2005 15:51	fleming.terrence@epa.gov	Terrence Fleming
7/7/2006 16:26	gamah@waterboards.ca.gov	Ginachi Amah
8/29/2007 16:19	gamenu@dpw.lacounty.gov	Geremew G. Amenu
8/6/2002 0:00	gary.wortham@tetrattech.com	Gary Wortham
4/22/2009 8:41	gba3@nyu.edu	Gerald Asare Bempong
3/10/2009 21:05	gchavez@ci.norwalk.ca.us	Grissel Chavez
10/22/2007 7:34	geoff@brosseau.us	Geoff Brosseau
2/22/2007 14:59	george.dayhuff@tetrattech.com	George Dayhuff
8/15/2005 13:53	gfrantz@waterboards.ca.gov	Greg Frantz
11/26/2002 0:00	ggreene@downeyca.org	Gerry Greene
3/9/2005 10:45	ghildeb@ladpw.org	Gary Hildebrand
1/22/2002 0:00	gilw@lwa.com	Gil Wheeler
2/28/2005 12:50	glinkletter@environcorp.com	Dr. George O. Linkletter
9/14/2006 13:40	gmusejr@mwdh2o.com	George W. Muse Jr.
10/6/2004 8:54	gogos0@bp.com	Stefan Gogosha
10/9/2002 0:00	griset@scag.ca.gov	Daniel E. Griset
1/16/2007 8:05	gvillarreal@rbf.com	Gian Villarreal
6/18/2008 12:23	hagop.bedikian@yahoo.com	Hagop Bedikian
3/2/2005 16:00	hashimoto.janet@epa.gov	Janet Hashimoto
4/25/2006 14:31	hgallardy@ladpw.org	Heather Gallardy
6/22/2007 18:29	hgest@burhenngest.com	Howard Gest
6/17/2008 15:14	hillary_g@cerrell.com	Hillary Gross
10/10/2007 12:25	hlundborg@waterboards.ca.gov	Holly Lundborg
7/11/2006 10:00	hmaloney@ci.monrovia.ca.us	Heather Maloney
11/17/2005 11:07	houstgrp@pacbell.net	Laura Cottrell
10/10/2006 10:59	hschillinger@kristar.com	Hal Schillinger
6/12/2008 8:14	hugo.bermudez@nassco.com	Bermudez, Hugo
2/6/2009 9:13	ihshanhsu.yeh@lacity.org	Yvonne Yeh
10/19/2006 10:35	isetziol@kpcc.org	Ilsa Setziol
5/1/2009 14:43	jalarcon@ci.malibu.ca.us	Jackie Alarcon
5/11/2009 14:57	james.m.phelan@exxonmobil.co	James Phelan
4/6/2009 19:07	janswift@live.com	jan andrew swift
6/30/2007 14:03	javed.hussain@veoliaes.com	Javed Hussain
12/7/2006 17:28	jbelle@mwdh2o.com	Janet Bell
6/2/2004 10:30	jberlin@carollo.com	Jeff Berlin
3/24/2008 14:26	jchien@parks.lacounty.gov	Jui Ing chien
5/1/2008 8:45	jcho@lvmwd.com	JIMMIE CHO
3/18/2005 12:58	jcowan@cityofalhambra.org	James Cowan
5/9/2006 12:33	jc Cox@waterboards.ca.gov	Joanne Cox

7/22/2005 12:09	jcrisol@dhs.ca.gov	Joseph Crisologo
4/29/2008 8:08	jcruz@dpw.lacounty.gov	Jemellee Cruz
3/3/2005 11:08	jcruz@ladpw.org	Jemellee Cruz
4/29/2003 0:00	jdfrei@stormwatergroup.com	Jim Frei
4/30/2009 14:41	jdonatucci@kleinfelder.com	John Donatucci
12/17/2008 15:24	jdreher@rinconconsultants.com	John Dreher
4/13/2007 16:56	jfordyce@waterboards.ca.gov	Jennifer Fordyce
3/1/2005 14:53	jgibson@torrnet.com	Jeffery W. Gibson
1/25/2006 7:47	jgully@lacsds.org	Joseph R. Gully
7/13/2005 10:08	jjensen@waterboards.ca.gov	Joanna Jensen
4/14/2003 0:00	jmiller3@ch2m.com	Judi Miller
12/19/2006 13:38	jmorton@igc.org	Jess Morton
3/4/2005 9:54	jmundy@lvmwd.com	John R. Mundy
7/21/2005 9:10	jnewman@waterboards.ca.gov	Jenny Newman
8/12/2008 14:54	job706sjamoroso@gmail.com	James Price
4/4/2005 9:43	joe.bellas@nbcuni.com	Joe Bellas
10/12/2005 12:51	john.craig@tetrattech-ffx.com	John Craig
7/17/2006 13:22	jpereira@ladpw.org	Jason Pereira
7/16/2004 13:33	jprice@waterboards.ca.gov	Jack Price
3/8/2005 10:51	jreinhardt@lvmwd.com	Jeff Reinhardt
2/10/2003 0:00	jtorres@ci.vernon.ca.us	Jerrick Torres
4/5/2007 16:20	justin@calcattlemen.org	Justin Oldfield
1/22/2009 7:56	jzane@wcenviro.com	Jeffrey Zane
11/5/2008 17:07	kathleen.bullard@tetrattech.com	Kathleen Bullard
3/15/2005 14:42	kathleen.enve@verizon.net	Kathleen McGowan
3/2/2009 11:26	kbrophy@gswater.com	Katherine Brophy
2/16/2004 11:47	kcole@wm.com	Kit Cole
6/15/2006 16:08	ken.franklin@lacity.org	Kenneth Franklin
8/29/2008 12:59	kerickson@rmcwater.com	Kraig Erickson
6/19/2009 9:10	kevin@g4grp.com	kevin p. garrity
10/23/2006 16:00	kfarfsing@cityofsignalhill.org	Kenneth C. Farfsing
4/21/2008 14:01	kgwells@earthlink.net	Kurt Wells
3/8/2005 15:09	kharris@waterboards.ca.gov	Ken Harris
4/28/2009 14:36	khoffman@lacsds.org	Ken Hoffman
2/15/2006 16:17	kjames@healthebay.org	Kirsten James
6/22/2004 12:29	kjones@dot.ca.gov	Keith Jones
7/24/2006 11:31	kkatona@lacobos.org	Karly Katona
1/24/2008 13:07	kmcgowan@geosyntec.com	Kathleen McGowan
11/7/2007 12:45	kmorris@lacsds.org	A. Kimo Morris
12/2/2008 16:27	kmorris@rmc.ca.gov	Katie Morris
11/28/2006 13:07	koletty@usc.edu	Stephen Koletty PhD
4/28/2005 13:15	kozelka.peter@epa.gov	Peter Kozelka
3/24/2005 14:34	kprickett@portla.org	Kat Prickett
3/14/2007 16:53	krubin@ladwp.com	Katherine Rubin
10/11/2005 15:34	ksusilo@geosyntec.com	Ken Susilo
5/22/2006 12:45	kthompson@mail.wqa.org	Kelley Thompson
4/19/2007 9:52	kward@waterboards.ca.gov	Kim Ward
3/18/2002 0:00	kweston@converseconsultants.com	Ken Weston
2/12/2007 10:18	laurie_solis@urscorp.com	laurie solis
9/29/2005 10:09	laustin@geosyntec.com	Lisa Austin
5/12/2009 14:13	lbond@rwglaw.com	Lisa Bond
12/20/2006 15:37	leo@wecklabs.com	Leo Raab

9/20/2006 8:23	lhornik@torrnet.com	Loriana Hornik
9/11/2008 10:09	lin.cindy@epa.gov	Cindy Lin
12/19/2006 11:27	lisa.carlson@lacity.org	Lisa Carlson
2/7/2001 0:00	lisa.williams@lsa-assoc.com	Lisa Williams
3/24/2004 11:19	llarsen@rbf.com	Laura Larsen
1/19/2005 10:42	lmartinez@biasc.org	Lisa Martinez
5/5/2009 12:05	lmckenney@rbf.com	Larry McKenney
10/4/2006 15:48	lnye@waterboards.ca.gov	L. B. Nye
5/12/2006 15:15	lois.miyashiro@pillsburylaw.com	Lois K. Miyashiro
12/12/2006 5:56	lokun@waterboards.ca.gov	Lori Okun
2/28/2005 11:12	lorettac@ci.irwindale.ca.us	Loretta Corpis
2/24/2009 15:16	lrockett@dpw.lacounty.gov	Laura Rockett
6/8/2005 15:05	lwarios@hotmail.com	Lisa Larios
7/17/2008 9:48	maricela1977@yahoo.com	Maricela Gomez
3/17/2005 14:19	mariki@ladpw.org	Menerva Ariki
1/18/2002 0:00	marym@water.ca.gov	Mary M. Miller
12/5/2007 12:43	mas.dojiri@lacity.org	Masahiro Dojiri
7/24/2007 9:46	masoliman@dpw.lacounty.gov	Maged Soliman
3/2/2005 14:40	matt_lyons@lbwater.org	Matt Lyons
3/10/2008 14:27	matthew_gorman@yahoo.com	Matthew Gorman
10/18/2005 9:54	mbaker@crglabs.com	Mark D. Baker
7/11/2006 16:12	mcohen@rwglaw.com	Matthew Cohen
11/8/2007 17:17	mdannucci@pirnie.com	Michael D'Annucci
3/4/2008 10:22	meino.mittelstedt@yahoo.de	meino.mittelstedt
3/18/2002 0:00	mgagan@rosekindel.com	Michael S. Gagan
3/28/2005 15:37	mgold@healthebay.org	Mark Gold
9/4/2007 11:15	mgrey@biasc.org	Mark Grey
1/19/2009 18:15	michael.a.beasley@boeing.com	Michael Beasley
12/6/2006 11:58	michael@hulsenv.com	Michael Nuisenr
10/19/2005 14:39	mike@wspa.org	Mike Wang
3/3/2005 10:09	mlcoffee@nossaman.com	Mary Lynn Coffee
7/12/2006 16:22	mlevy@waterboards.ca.gov	Michael Levy
3/26/2002 0:00	moillataguerre@ci.glendale.ca.u	Maurice Oillataguerre
1/25/2006 18:01	mpestrel@ladpw.org	Mark Pestrella
3/26/2007 14:40	mpeterson@kpcc.org	Molly Peterson
4/4/2007 9:11	mpf@stateside.com	Melissa Patra Farmer
3/4/2005 14:59	mrnolan@socal.rr.com	Nolan Farkas
12/1/2006 2:38	mstevens@kinneticlabs.com	Marty Stevenson
8/28/2008 8:50	mvelasco@dpw.lacounty.gov	Martha Velasco
6/9/2008 15:44	mvoong@waterboards.ca.gov	Man Voong
6/25/2001 0:00	mw@winefieldassoc.com	Matt Winefield
12/4/2006 11:00	mzulauf@irisenv.com	Michelle Zulauf
2/8/2007 9:35	nadadora79@hotmail.com	Laurel Fink
5/1/2008 16:49	nancy@lasgrwc.org	Nancy Steele
5/7/2007 16:55	nancyf@rinconconsultants.com	Nancy Fox-Fernandez
12/19/2006 12:43	neal.shapiro@smgov.net	Neal Shapiro
12/18/2008 8:10	nisheeth.kakarala@gmail.com	Nisheeth Kakarala
6/17/2008 13:55	nmartorano@waterboards.ca.gc	Nicholas Martorano
8/7/2007 9:51	obuje@hotmail.com	victor ukpolo
12/9/2008 18:36	oceanguy02@yahoo.com	Chuck Cleeves
7/14/2008 7:36	paul.cobian@lacity.org	Paul S. Cobian
8/19/2008 14:15	pbarrowman@healthebay.org	Polly Barrowman

7/24/2007 16:26	penny.weiland@lacity.org	Penny Weiland
5/20/2009 11:51	peter.gutierrez@lw.com	Peter J. Gutierrez
5/21/2007 15:08	peterson@polb.com	Lee Peterson
3/2/2005 11:56	pfu@huntingtonpark.org	Patrick Fu
10/24/2005 11:14	pgouveia@waterboards.ca.gov	Patricia Gouveia
9/5/2007 9:29	pmarkle@lacsds.org	Philip Markle
8/16/2005 14:27	pmcgaw@archernorris.com	Peter W. McGaw
2/24/2006 12:06	powerskj@yahoo.com	Kevin Powers
4/16/2006 0:31	pweinberger55@hotmail.com	Peter Weinberger
10/23/2008 12:47	r.glaubitz@yahoo.com	Robert Glaubitz
2/16/2009 13:00	ralph2ortega@yahoo.com	ralph ortega
3/11/2005 11:47	rbraden@sfcity.org	Robert M. Braden
1/27/2006 11:04	rchristmann@waterboards.ca.gov	Rebecca Christmann
6/9/2009 10:25	rdalfarra@sespeconsulting.com	Rob DalFarra
7/5/2006 14:46	rdickerson@waterboards.ca.gov	Roni Dickerson
12/6/2008 12:49	rfields68@aol.com	Robert Fields
4/28/2006 8:51	richard.a.haimann@mwhglobal.com	Richard Haimann
6/21/2009 14:31	rljenk4979@earthlink.net	Richard L. Jenkins
7/17/2002 0:00	rmaestu@waterboards.ca.gov	Rafael Maestu
3/4/2005 11:50	rmontevideo@rutan.com	Richard Montevideo
8/15/2002 0:00	robert_wu@dot.ca.gov	Bob Wu
3/7/2005 7:30	roger.james@worldnet.att.net	Roger B James
4/4/2005 7:39	rorton@lvmwd.com	Randal Orton
7/14/2008 9:03	royallmichael@yahoo.com	Michael Royall
7/11/2006 15:55	rsams@waterboards.ca.gov	Robert Sams
3/20/2001 0:00	ryoung@bwslaw.com	Rufus Young
5/27/2009 12:47	sadie.iverson.az@gmail.com	Sadie Iverson
5/30/2007 21:16	saeedtabatabaeepour@yahoo.com	Saeed Tabatabaeepour
7/14/2008 10:47	samantha.yu@ladwp.com	Samantha Yu
4/2/2009 9:58	sarahd@nautilusenvironmental.com	Sarah Douglass
4/18/2007 9:25	sbeltran@allenmatkins.com	Shanda Beltran
3/7/2005 11:28	sbrotten@icfconsulting.com	Scott Broten
7/25/2006 15:49	scain@waterboards.ca.gov	Stephen Cain
4/24/2003 0:00	schroederdj@cdm.com	Donald Schroeder
1/3/2006 11:39	sewers@dslextreme.com	Anna Sklar
8/9/2005 19:51	sgreen@lacsds.org	Sharon N. Green
11/5/2008 9:29	shawn.hagerty@bbklaw.com	Shawn Hagerty
2/28/2005 17:29	shellis@lwa.com	Shelli St.Clair
2/17/2009 9:48	shemyra_powers@kindermorga.com	Shemyra Powers
9/23/2008 11:21	skelley@waterboards.ca.gov	Sandra Kelley
3/1/2005 15:07	skennedy@enfact.net	Sheila Kennedy
3/28/2005 15:36	smith.davidw@epa.gov	David W. Smith
10/5/2000 0:00	snasserie@waterboards.ca.gov	Susana Nasserie
5/6/2009 18:08	sndworsky@gmail.com	Susan Dworsky
5/29/2009 11:49	snespeca@percwater.com	Sharon Nespeca
2/25/2009 15:48	sp2nicholson@earthlink.net	Sonia Nicholson
2/28/2005 10:33	spaulsen@flowscience.com	Susan C. Paulsen Ph.D. P.E.
6/6/2005 15:06	spomrehn@lakewoodcity.org	Scott Pomrehn
4/12/2007 11:02	sschaless@ladpw.org	T Scott Schales
1/9/2002 0:00	stovermw@ix.netcom.com	Michael Stover
3/2/2005 9:44	susanstark10@sbcglobal.net	Susan Stark
1/6/2005 15:15	tbilezikjian@rbf.com	Tanya Bilezikjian

11/1/2007 9:59	tegoscue@waterboards.ca.gov	Tracy Egoscue
5/8/2008 13:30	teresa.olmsted@ittrmi.com	Teresa Olmsted
12/11/2008 12:04	terrabelalandscap@gmail.com	Paula Henson
8/23/2007 10:43	tgaur@smbaykeeper.org	Tatiana K. Gaur
8/13/2008 6:30	tmoon@dpw.lacounty.gov	TJ Moon
3/11/2009 12:21	tobymoore@gswater.com	Toby Moore
3/2/2005 11:01	toleary@longbeach.gov	Tom Leary
10/8/2008 11:29	tracyk@lwa.com	Tracy Krueger
7/1/2004 11:22	trodgers@waterboards.ca.gov	Theresa Rodgers
11/13/2007 11:28	tslifko@lacsds.org	Theresa Slifko
3/3/2005 9:08	tsmith@bonterraconsulting.com	Thomas E Smith Jr
10/21/2008 11:18	tthompson@entrix.com	Tim Thompson
3/11/2009 10:00	tweiland@lacsds.org	Thomas E. Weiland
4/22/2003 0:00	vconway@lacsds.org	Victoria O. Conway
2/15/2007 11:03	vhevener@lynwood.ca.us	Vanessa Hevener
6/8/2009 11:39	vmuller@justiceassociates.com	Valerie Muller
10/11/2006 14:13	wbotha@daley-heft.com	Wentzelee Botha
11/18/2005 5:14	wfunderburk@sfcfirm.com	William Funderburk
5/23/2008 6:00	william_rea@yahoo.com	William John Rea Jr.
1/10/2009 11:09	wlaton@aol.com	William Laton
10/6/2002 0:00	wgrandin@aol.com	Wayne Grandin
7/10/2008 9:55	ysim@dpw.lacounty.gov	Youn Sim
4/4/2006 16:22	ysim@ladpw.org	Youn Sim
10/5/2006 14:49	zora.baharians@lacity.org	zora Baharians

LYRIS MAILING

LIST NAME: SW-LA-MSCI

DATE MAILED: 7-4-09

DATEJOINED_	EMAILADDR_	FULLNAME_
7/6/2009 13:38	City_manager@ci.glendora.ca	Chris Jeffers
7/6/2009 13:58	EKiepke@WILLDAN.com	E. Kiepke
7/6/2009 13:21	FredLatham@santafesprings.c	Frederick W. Latham
7/6/2009 13:07	James.Destefano@ci.diamondc	James DeStefano
7/6/2009 13:35	John.Beshay@westcovina.org	John Beshay
7/6/2009 13:53	Kaden.Young@culvercity.org	Kaden Young
7/6/2009 13:51	Rhughes@WILLDAN.com	Roxanne Hughes
7/6/2009 13:57	Robert.Vega@lacity.org	Robert Vega
7/6/2009 13:04	Rwood@beverlyhills.org	Roderick J. Wood
7/6/2009 13:49	Skennedy@enfact.net	Sheila Kennedy
7/6/2009 13:41	Steven.Finton@CulverCity.org	Steven Finton
7/6/2009 13:55	TLANGE@santa-clarita.com	Travis Lange
7/6/2009 13:18	acablay@pico-rivera.org	Al Cablay
7/6/2009 13:43	acecivil@aol.com	Carlos A. Alba
7/6/2009 13:19	adahlerbruch@cityofrh.net	Anton Dahlerbruch
7/6/2009 13:47	afarassati@cityofcalabasas.co	Alex Farassati
7/6/2009 13:54	aharrington@ci.claremont.ca.u	Andrea Harrington
7/6/2009 13:46	ajensen@ci.walnut.ca.us	Alicia Jensen
7/6/2009 13:58	amelia@hulsenv.com	
7/6/2009 13:39	amho@montereypark.ca.gov	Amy Ho
7/6/2009 13:23	andrew.pasmant@westcovina.	Andrew G. Pasmant
7/6/2009 13:18	arigg@pvestates.org	Allan Rigg
7/6/2009 13:41	ashadbehr@cityofhawthorne.o	Arnold Shadbehr
7/6/2009 13:17	bbrager@ci.malibu.ca.us	Bob Brager
7/6/2009 13:56	bdedeaux@rkagroup.com	Barbara Dedeaux
7/6/2009 13:19	bill.workman@redondo.org	Bill Workman
7/6/2009 13:44	biniguez@bellflower.org	Bernie Iniguez
7/6/2009 13:38	binman@ci.sierra-madre.ca.us	Bruce Inman
7/6/2009 13:45	bmattern@sgch.org	Bruce Mattern
7/6/2009 13:20	bmichaelis@ci.san-dimas.ca.u	Blaine M. Michaelis
7/6/2009 13:04	bteaford@ci.burbank.ca.us	Bonnie Teaford
7/6/2009 13:54	cammc@jlha.net	John Hunter Cameron McCullough
7/6/2009 13:54	cbarsu@ci.el-monte.ca.us	Carmen Barsu
7/6/2009 13:41	cbradshaw@ci.claremont.ca.u	Craig Bradshaw
7/6/2009 13:43	ccash@paramountcity.com	Chris Cash
7/6/2009 13:21	ccollins@cityofsanmarino.org	Cindy Collins
7/6/2009 13:18	cconsunji@ci.norwalk.ca.us	Chino Consunji
7/6/2009 13:06	cevans@comptoncity.org	Charles Evans
7/6/2009 13:08	citymanager@hiddenhillscity.o	Cherie L. Paglia
7/6/2009 13:19	clehr@rpv.com	Carolyn Lehr
7/6/2009 13:23	cmartin@templecity.us	Charles R. Martin
7/6/2009 13:55	cmeeker@cityofalhambra.org	Claudine Meeker
7/6/2009 13:24	cmrtay@wlv.org	Raymond B. Taylor
7/6/2009 13:54	croberts@aaeinc.com	Cory Roberts
7/6/2009 13:07	dalvarez@downeyca.org	Desi Alvarez
7/6/2009 13:42	danflorescu@caaprofessionals	Dan Florescu
7/6/2009 13:08	ddavies@ci.glendora.ca.us	Dave Davies
7/6/2009 13:10	dkeesey@ci.la-verne.ca.us	Daniel Keesey
7/6/2009 13:48	dlopez@baldwinpark.com	David Lopez
7/6/2009 13:34	dlopez@pico-rivera.org	Debbie Lopez
7/6/2009 13:39	donjensen@santafesprings.org	Donald K. Jensen

7/6/2009 13:47 dougp@ci.rolling-hills-estates.i Douglas Prichard
 7/6/2009 13:57 dpankau@cityofcalabasas.com Daniel Pankau
 7/6/2009 13:24 dpelser@cityofwhittier.org David Pelser
 7/6/2009 12:59 dpenman@ci.arcadia.ca.us Donald Penman
 7/6/2009 13:49 drynn@ci.burbank.ca.us Daniel Rynn
 7/6/2009 13:22 eaguilar@ci.sierra-madre.ca.u Elaine Aguilar
 7/6/2009 13:17 eahrens@cityofmaywood.com Ed Ahrens
 7/6/2009 13:23 efresch@ci.vernon.ca.us Eric Fresch
 7/6/2009 13:09 ehitti@lcf.ca.gov Edward Hitti
 7/6/2009 13:50 ekiepke@willdan.com E. Kiepke
 7/6/2009 13:41 emansfield@aei-casc.com Ernie Mansfield
 7/6/2009 13:40 emarquez@hgcity.org Ernesto Marquez
 7/6/2009 13:46 esaikaly@lynwood.ca.us Elias Saikaly
 7/6/2009 13:17 esaykali@montereypark.ca.go Elias Saykali
 7/6/2009 13:39 esbenshades@accessduarte.c Steve Esbenshades
 7/6/2009 13:01 fdelach@ci.azusa.ca.us Francis M. Delach
 7/6/2009 13:45 fwu@dpw.lacounty.gov Frank Wu
 7/6/2009 13:37 gcanton@downeyca.org Gerald Caton
 7/6/2009 13:40 gdolan@citymb.info Geoff Dolan
 7/6/2009 13:07 georged@accessduarte.com Darrell George
 7/6/2009 13:51 ggrene@downeyca.org Gerry Greene
 7/6/2009 13:09 gkau@cityofinglewood.org Glen Kau
 7/6/2009 13:09 gkorduner@huntingtonpark.or Gregory Korduner
 7/6/2009 13:06 gperez@cityofcudahyca.gov George Perez
 7/6/2009 13:57 gregg@ci.rolling-hills-estates.c Gregg Grammer
 7/6/2009 13:55 guy-welling@smgov.net Gary Welling
 7/6/2009 13:09 gw1763@aol.com Stan Carroll
 7/6/2009 13:10 gyamachika@lapuente.org Gregg Yamachika
 7/6/2009 13:47 hbehboodi@hermosabch.org Homayoun Behboodi
 7/6/2009 13:10 hchambers@lakewoodcity.org Howard L. Chambers
 7/6/2009 13:56 hmaloney@ci.monrovia.ca.us Heather Maloney
 7/6/2009 13:39 ideltoro@ci.azusa.ca.us Israel Del Toro
 7/6/2009 13:41 jaormelas@bellgardens.org G. Simonian
 7/6/2009 13:17 jarndt@citymb.info Jim Arndt
 7/6/2009 13:52 jcarlson@ci.sierra-madre.ca.u James Carlson
 7/6/2009 13:08 jcolombo@hgcity.org Joseph Colombo
 7/6/2009 13:43 jcowam@cityofalhambra.org James Cowan
 7/6/2009 13:09 jdballas@cityofindustry.org John D. Ballas
 7/6/2009 13:47 jdescalzo@beverlyhills.org Josette Descalzo
 7/6/2009 13:43 jdettle@torrnet.com John Dettle
 7/6/2009 13:07 jerry.fulwood@culvercity.org Jerry B. Fulwood
 7/6/2009 13:19 jessie_powell@urscorp.com Jessie Powell
 7/6/2009 13:05 jgroomes@carson.ca.us Jerome Groomes
 7/6/2009 13:46 jharmon@weho.org Jan Harmon
 7/6/2009 13:51 jhunter@jlha.net John L. Hunter
 7/6/2009 13:07 jmussenden@ci.el-monte.ca.u James W. Mussenden
 7/6/2009 13:06 jorger@ci.commerce.ca.us Jorge Rifa
 7/6/2009 13:03 joropeza@bellgardens.org John Oropeza
 7/6/2009 13:40 jortega@lapuente.org Jeanette Ortega
 7/6/2009 13:40 joyce.lee@ci.diamond-bar.ca.u Joyce Lee
 7/6/2009 13:06 jparker@ci.claremont.ca.us Jeff Parker
 7/6/2009 13:08 jpathirana@cityofhawthorne.or Jag Pathirana

7/6/2009 13:46	jpulido@sfcity.org	Jose E. Pulido
7/6/2009 13:38	jranellis@ci.la-verne.ca.us	J. R. Ranells
7/6/2009 13:56	jstock@bellflower.org	Jerry Stock
7/6/2009 13:18	jvalentine@cityofpasadena.net	Jim Valentine
7/6/2009 13:35	jvocola@ci.malibu.ca.us	Jennifer Voccola
7/6/2009 13:07	jwayt@elsegundo.org	Jack Wayt
7/6/2009 13:20	kathleen.enve@verizon.net	Kathleen McGowan
7/6/2009 13:45	kbreskin@iawndalecity.org	Keith Breskin
7/6/2009 13:03	kevinpowers@caaprofessional	Kevin Powers
7/6/2009 13:22	kfarfsing@ci.signal-hill.ca.us	Kenneth C. Farfsing
7/6/2009 13:06	kgallivan@ci.covina.ca.us	Karen Gallivan
7/6/2009 13:03	kimberlycolbert@caaprofessio	Kimberly Colbert
7/6/2009 13:36	kpatel@ci.san-dimas.ca.us	Krishna Patel
7/6/2009 13:21	kpulskamp@santa-clarita.com	Kenneth R. Pulskamp
7/6/2009 13:09	ktam@ci.irwindale.ca.us	Kwok Tam
7/6/2009 13:40	kvivanti@lakewoodcity.org	Konya Vivanti
7/6/2009 13:52	kwatson@cityofinglewood.org	Ken Watson
7/6/2009 13:38	kwilson@ci.vernon.ca.us	Samuel Kevin Wilson
7/6/2009 13:40	lamimoto@cityofinglewood.org	Lauren Amimoto
7/6/2009 13:22	lamont.ewell@smgov.net	P. Lamont Ewell
7/6/2009 13:18	lbenedetti@paramountcity.com	Linda Benedetti-Leal
7/6/2009 13:23	ljackson@torrnet.com	LeRoy Jackson
7/6/2009 13:20	lleblanc@cityofrosemead.org	Lou LeBlanc
7/6/2009 13:22	lmyers@ci.south-pasadena.ca	Lillian Myers
7/6/2009 13:36	lpyeatt@comptoncity.org	Leslie Aian Pyeatt
7/6/2009 13:47	lramirez@cityofbell.org	Luis Ramirez
7/6/2009 12:58	luwan@cityofalhambra.org	Julio J. Fuentes
7/6/2009 13:39	malexander@lcf.ca.gov	Mark R. Alexander
7/6/2009 13:11	mark-christoffels@longbeach.org	Mark Christoffels
7/6/2009 13:48	mcuevas@pico-rivera.org	Marco Cuevas
7/6/2009 13:00	mdadian@cityofartesia.us	Maria Dadian
7/6/2009 13:45	mduran@ci.gardena.ca.us	Mike Duran
7/6/2009 13:04	megan@bellflower.org	Mike Egan
7/6/2009 13:58	michael@hulsen.com	J. Michael Huls
7/6/2009 13:36	mike.shay@redondo.org	Mike Shay
7/6/2009 13:05	mike_ogrady@ci.cerritos.ca.us	Mike O'Grady
7/6/2009 13:04	mkeith@cityofbradbury.org	Michelle Keith
7/6/2009 13:08	miansdell@ci.gardena.ca.us	Mitchell G. Lansdell
7/6/2009 13:47	mmilhiser@cityoflamirada.org	Mike Milhiser
7/6/2009 13:10	mmiyoshi@lawndalecity.org	Marlene Miyoshi
7/6/2009 13:58	mmunoz@cityoflamirada.org	Marlin Munoz
7/6/2009 13:47	moillataguerre@ci.glendale.ca	Maurice Oillataguerre
7/6/2009 13:47	morad.sedrak@iacity.org	Morad Sedrak
7/6/2009 13:21	mpaules@sgch.org	P. Michael Paules
7/6/2009 13:11	mpestrel@dpw.lacounty.gov	Mark Pestrella
7/6/2009 13:38	mrodriguez@ci.arcadia.ca.us	Marie Rodriguez
7/6/2009 13:46	mstrenn@sogate.org	Mary Strenn
7/6/2009 13:52	nasser.sh@lcf.ca.gov	Nasser Shoushtarian
7/6/2009 13:43	neal.shapiro@smgov.net	Neal Shapiro
7/6/2009 13:43	ocramer@santa-clarita.com	Oliver Cramer
7/6/2009 13:24	parevalo@weho.org	Paul Arevalo
7/6/2009 13:41	pelkins@carson.ca.us	Patricia Elkins

7/6/2009 13:40	pfu@huntingtonpark.org	Pat Fu
7/6/2009 12:57	radeva@ci.agoura-hills.ca.us	Ramiro Adeva
7/6/2009 13:36	randersen@ci.burbank.ca.us	Rodney Andersen
7/6/2009 11:43	randerson@waterboards.ca.gov	Robert Anderson
7/6/2009 13:17	rbow@ci.monrovia.ca.us	Ron Bow
7/6/2009 13:22	rdickey@sogate.org	Robert T. Dickey
7/6/2009 13:42	rfajardo@elsegundo.org	Ron Fajardo
7/6/2009 13:17	rhaley@lynwood.ca.us	Roger Haley
7/6/2009 13:48	rkenny@soelmonte.org	Ron Kenny
7/6/2009 13:41	robertz@ci.commerce.ca.us	Robert Zarrilli
7/6/2009 13:20	rruiz@sfcity.org	Ron Ruiz
7/6/2009 13:53	rsalas@lapuente.org	Rene Salas
7/6/2009 13:49	rtahir@tecsenv.com	Ray Tahir
7/6/2009 13:17	rtorres@cityofmontebello.com	Richard Torres
7/6/2009 13:53	rvasquez@scsengineers.com	Ralph Vasquez
7/6/2009 13:23	rwishner@ci.walnut.ca.us	Rob Wishner
7/6/2009 13:49	sam.gutierrez@westcovina.org	Sam Gutierrez
7/6/2009 13:20	samw@ci.rolling-hills-estates.ca.us	Samuel R. Wise
7/6/2009 13:52	sarinamoraleschoate@santafe.org	Sarina Morales-Choate
7/6/2009 13:08	sburrell@hermosabch.org	Stephen R. Burrell
7/6/2009 13:37	scott@wlv.org	Scott Wolfe
7/6/2009 13:57	sepstein@beverlyhills.org	Shana Epstein
7/6/2009 13:43	sfurukawa@ci.south-pasadena.ca.us	Shin Furukawa
7/6/2009 13:25	sgrund@lacs.d.org	Shannon Grund
7/6/2009 13:11	shahram.kharaghani@lacity.org	Shahram Kharaghani
7/6/2009 13:38	shelvey@cityofwhittier.org	Stephen W. Helvey
7/6/2009 11:32	skelley@waterboards.ca.gov	Sandra Kelley
7/6/2009 13:52	snatsuhara@ci.vernon.ca.us	Sherwood Natsuhara
7/6/2009 13:46	sochoa@ci.monrovia.ca.us	Scott Ochoa
7/6/2009 13:08	szurn@ci.glendale.ca.us	Stephen M. Zurn
7/6/2009 13:04	tcoroalles@cityofcalabasas.ca.us	Anthony Coroalles
7/6/2009 13:03	tdiaz@cityofbell.org	Robert A. Rizzo
7/6/2009 13:46	tmelendrez@cityofmontebello.com	Tom Melendrez
7/6/2009 13:11	todom@lomita.com	Tom A. Odom
7/6/2009 13:10	trobenson@cityoflamirada.org	Tom E. Robinson
7/6/2009 11:29	trodgers@waterboards.ca.gov	Theresa L. Rodgers
7/6/2009 13:22	tybarra@soelmonte.org	Tony Ybarra
7/6/2009 13:42	vcastro@ci.covina.ca.us	Vivian Castro
7/6/2009 13:56	vhevener@lynwood.ca.us	Vanessa Hevener
7/6/2009 13:55	victorukpolo@caaprofessionals.org	Victor Ukpolo
7/6/2009 13:53	vrollinger@carson.ca.us	Victor Rollinger
7/6/2009 13:03	vsinghal@baldwinpark.com	Vijay Singhal
7/6/2009 13:52	wrlindinc@aol.com	Wes Lind
7/6/2009 13:35	ys@cityofrh.net	Yolanta Schwartz

California Regional Water Quality Control Board, Los Angeles Region
320 W. 4th Street, 1st Floor Carmel Room
Los Angeles, CA 90013

Public Workshop on the Limited Re-opener of the Los Angeles County Municipal Separate
Storm Sewer System Permit to Incorporate Waste Load Allocations from the Los Angeles
River Watershed Trash TMDL

July 29, 2009 at 10:00 AM

AGENDA

10:00 – 10:15 AM	Welcome & Introductions
10:15 – 10:45 AM	Staff Presentation
10:45 – 11:55 AM	Questions
11:55 AM – 12:00 PM	Closing Remarks
12:00 PM	Adjourn

Los Angeles County Municipal Storm Water
Permit: Limited Reopener to Incorporate Waste
Load Allocations for the Los Angeles River
Watershed Trash Total Maximum Daily Load

Public Workshop
Los Angeles Regional Board

July 29, 2009

Proposal - Limited Re-opener

- Revise the County of Los Angeles Municipal Separate Storm Sewer System (MS4) Permit (NPDES No. CAS004001) to include waste load allocations for trash in the Los Angeles River Watershed

LA County MS4 Permit Background

- LA County MS4 Permit – 2001
 - Compliance with water quality standards
 - Mitigation criteria for new development and redevelopment
 - Regional monitoring, tributary monitoring and bioassessment
 - Controls to reduce trash
- LA County MS4 Permit Re-opener – 2006
 - Receiving Water Limitations = REC-1 Bacteria Objectives
 - Prohibition on summer dry weather discharges that cause or contribute to exceedances of bacteria objectives at Santa Monica Bay beaches

Background - 2

- LA County MS4 Permit Re-opener – 2007
 - Receiving Water Limitations = REC-1 Bacteria Objectives
 - Prohibition on summer dry weather discharges that cause or contribute to exceedances of bacteria objectives at Mothers' Beach and Basins D, E, and F in Marina del Rey Harbor
- LA County MS4 Permit Re-opener – 2009 (proposed)
 - Incorporate Waste Load Allocations established in TMDL for trash discharges in the Los Angeles River Watershed

Limited Re-opener

- Covers urban runoff and stormwater discharges within the Los Angeles River Watershed
- Incorporates Waste Load Allocations for trash as provided in the Los Angeles River Trash TMDL
- Provides Compliance Monitoring Requirements

LA River Watershed Trash TMDL

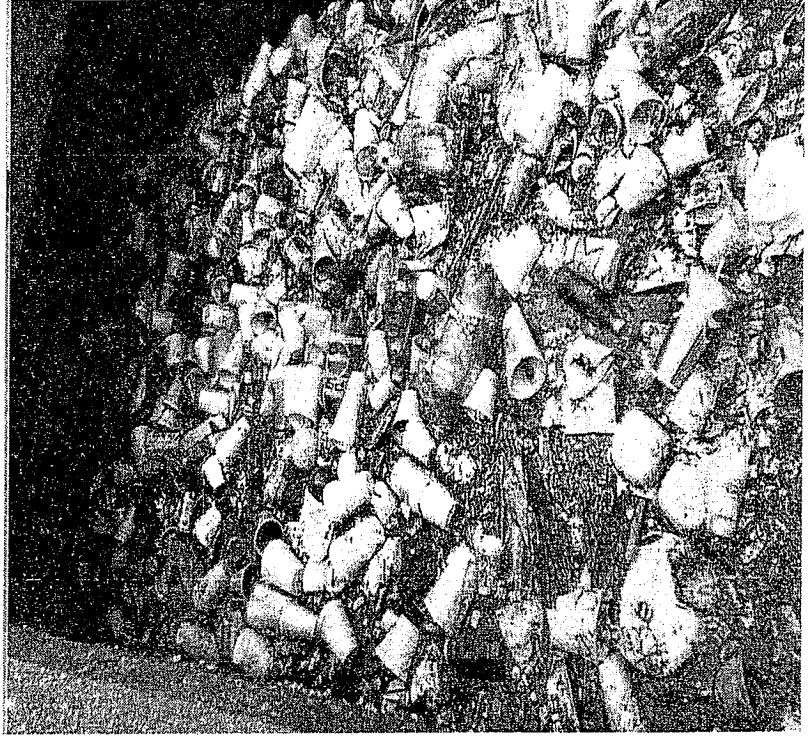
- Regional Board adopted TMDL on August 9, 2007
- State Board approved on April 15, 2008
- Office of Administrative Law approved on July 1, 2008
- U.S. EPA approved on July 24, 2008
- TMDL Effective Date - September 23, 2008

LA River Watershed Trash TMDL - Scope

- Impaired Reaches
 - Los Angeles River (Reaches 1, 2, 3, 4 & 5)
 - Los Angeles River Estuary
 - Los Angeles River Tributaries
 - Peck Road Lake, Echo Park Lake & Lincoln Park Lake
- 609 square miles
- 44 Responsible Jurisdictions
 - County of Los Angeles
 - 42 Cities
 - California Department of Transportation (Caltrans)

Sources of Trash

- Storm drain discharges - primary source of trash in Los Angeles River



Water Quality Objectives

Floating Material

- “Waters shall not contain floating materials including solids, liquids, foams, and scum in concentrations that cause nuisance or adversely affect beneficial use.”

Solid, Suspended, or Settleable Materials

- “Waters shall not contain suspended or settleable material in concentrations that cause nuisance or adversely affect beneficial uses.”

Waste Load Allocation (WLA)

- Baseline WLA =

Summation of: Land use area x trash generated (by land use)

- Interim WLAs =

% reductions of the Baseline WLA

- Final WLA = Numeric Target = 0

Applicable WLAs & Compliance Dates

Date	WLA	Compliance Point
Sep 30, 2010	40% of Baseline WLA	50% of the baseline (re-opener)
Sep 30, 2011	30% of Baseline WLA	40% of Baseline
Sep 30, 2012	20% of Baseline WLA	30% of Baseline
Sep 30, 2013	10% of Baseline WLA	20% of Baseline
Sep 30, 2014	0% of Baseline WLA	10% of Baseline
Sep 30, 2015	0% of Baseline WLA	3.3% of Baseline
Sep 30, 2016	0% of Baseline WLA	0% of Baseline

WLA Compliance Strategies

- Full capture systems
 - Installation results in full compliance for drainage area (subject to proper operation and maintenance).
- Partial capture systems
 - Compliance determined by annual calculation of trash discharges
- Institutional controls
 - Also requires annual determination of trash discharges

Trash TMDL Implementation Mechanism

- Per the Los Angeles River Watershed Trash TMDL:

“This TMDL will be implemented through stormwater permits and via the authority vested in the Executive Officer by section 13267 of the Porter-Cologne Water Quality Control Act: (Water Code section 13000 et seq.).”

Legal and Regulatory Basis

- 40 CFR 122.44(d)(1)(vii)

The Permitting Authority shall ensure that:

- (A) The level of water quality to be achieved by limits on point sources established under this paragraph is derived from, and complies with all applicable water quality standards; and
- (B) Effluent limits developed to protect a narrative water quality criterion, a numeric water quality criterion, or both, are consistent with the assumptions and requirements of any available waste load allocation for the discharge prepared by the State and approved by EPA pursuant to 40 CFR 130.7.

Proposed Amendments

- New section created and added to current LA MS4 Permit
 - Part 7. TMDL Provisions
 - LA River Trash TMDL WLAs and Compliance Points
 - Full Capture Certification Process
 - Compliance Monitoring (Daily Generation Rate [DGR]) Calculation
 - New Definitions

Next Steps

- Comments on Workshop (August 12, 2009)
 - Submit comment - *to attention of Ivar Ridgeway* -
via e-mail or regular mail
- Public Notice Draft Permit (Aug/Sept 2009)
- Comment Period - 45 days
- Board Hearing (Fall 2009)

For More Information

- Subscribe to "Storm Water – Los Angeles Co MS4" LYRIS list at:

http://www.waterboards.ca.gov/resources/email_subscriptions/reg4_subscribe.shtml

- Ivar Ridgeway

Stormwater Permitting

(213) 620-2150

Iridgeway@waterboards.ca.gov

- Ginachi Amah

Basin Planning

(213) 576-6685

gamah@waterboards.ca.gov

This Page Intentionally
Left Blank



This Page Intentionally
Left Blank